

66 Piece Maintenance Budget Toolkit				
Stock Code	System Code	Description	Uom	Qty
MX0540	A0011116	TK0925 5 Tier Maxpro Toolbox, 550 x 270 x 226 mm	EA	1
HS0920	G0000584	TK0925 Brass Padlock, 40 mm	EA	1
32-TS19	A0001584	TK0925 LBS Spanner Set, 6-19 mm	EA	1
TX0100	A0014928	TK0925 13 Piece, 1/2" DR LBS Socket Set, 8-22 mm	EA	1
97-FCTB0 1	A0003773	TK0925 Foam Cut for Toolbox	EA	1
JT0055	A0008495	TK0925 Allen Key Set, Ball-Tip, 1.5-10 mm, Plastic Clip	EA	1
47-OKR10	A0002021	TK0925 Retractable Knife	EA	1
RA0030	A0011866	TK0925 Torpedo Mag Spirit Level	EA	1
47-CL450FP	A0001896	TK0925 Claw Hammer, 450g Fibre Shaft PVC Grip	EA	1
OC0110	A0016272	TK0925 Waterpump Plier, 250 mm	EA	1
OC0080	A0016266	TK0925 Combination Plier, 200 mm	EA	1
OC0101	A0016270	TK0925 Long Nose Plier 200 mm	EA	1
OC0062	A0016259	TK0925 Side-Cuttetr Plier, 200 mm	EA	1
47-OWS101	A0002112	TK0925 Automatic Wire Stripper	EA	1
OC0121	A0016274	TK0925 Vice Grip, 200 mm	EA	1
RD0006	-	TK0925 Prick Punch 2 x 100 mm PKP 5-64	EA	1
MX0452	A0002083	TK0925 Shifting Spanner, 200 mm	EA	1
MX0407	A0011079	TK0925 Heavy-Duty Steel Tape Measure, 5 m x 25 mm	EA	1
RA0050	A0011872	TK0925 6 Piece Jewellers Screwdriver Set	EA	1
OC0050	A0011348	TK0925 6 Piece Machanic Screwdriver Set (Black Tip)	EA	1
56-TKAA02	A0002195	TK0925 Small Torch (2 x AA Cree LED)	EA	1

20 Piece Boilermaker Aide Toolkit

Stock Code	System Code	Description	Uom	Qty
AT0032	A0004417	TK0900 Cold Flat Chisel, 13 x 150 mm	EA	1
AT0037	A0004422	TK0900 Cold Flat Chisel, 19 x 200 mm	EA	1
RC0102	A0011973	TK0900 Medium-Duty Ribbed G Clamp, 120/6, 150 mm	EA	2
MF0014	A0009900	TK0900 Second Cut Flat File, 300 mm	EA	1
MX3600	A0011185	TK0900 20 T Hacksaw Frame, 300 mm	Ea	1
TX2004	A0014976	TK0900 Ballpein Hammer with Fibreglass Handle, 900g, 25232	Ea	1
SK0070	A0012535	TK0900 Chipping Hammer with Spring Handle (Straight)	EA	1
HS0920	G0000584	TK0900 Brass Key to Differ Padlock, 264,36 mm, 3 Keys	EA	1
MX0190	A0010996	TK0900 Vice Grip Plier, DI-20, 250 mm	EA	1
RD0010	A0012021	TK0900 Round Centre Punch, 117E, 150 mm	EA	1
WR0119	A0015340	TK0900 Mechanic Blackpoint Screwdriver, 6021, 10 x 250 mm	EA	1
GD0368	A0006722	TK0900 Double Open End Spanner No. 6, 18 x 19 mm	EA	2
GD3672	A0007484	TK0900 Double Open End, Spanner No. 6, 24 x 26 mm	EA	2
MX0400	A0011077	TK0900 Rubber Case Measuring Tape, 16 mm x 3 m	EA	1
MX0535	A0011115	TK0900 3 Tray Cantilever Toolbox, 550 x 230 x 160 mm	EA	1
MX0454	A0011092	TK0900 Heavy-Duty Adjustable Shifter Wrench, 300 mm	EA	1
JL0203	A0002103	TK0900 Heavy-Duty, Pipe Wrench 350 mm	EA	1



A0011077



C0000584



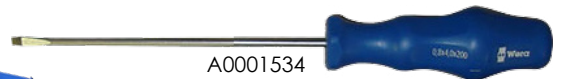
A0004422



A0009900



A0004417



A0001534



A0012021



A0011115



A0011973



A0006722

A0007484



A0002087



A0010996



A0011185



A0014976



A0002103



A0012538

TOOLKITS AND ASSORTMENTS

32 Piece Boilermaker Aide Toolkit

Stock Code	System Code	Description	Uom	Qty
AT0032	A0004417	TK0901 Cold Flat Chisel, 13 x 150 mm	EA	1
AT0037	A0004422	TK0901 Cold Flat Chisel, 19 x 200 mm	EA	1
RC0102	A0011973	TK0901 Medium-Duty Ribbed G Clamp, 12/6, 150 mm	EA	2
GR0205	A0007907	TK0901 Spring Divider, DD/12, 300 mm	EA	1
GR0202	A0007904	TK0901 Spring Divider, DD/6, 150 mm	EA	1
MF0014	A0009900	TK0901 2nd Cut Flat File, 300 mm	EA	1
GR0801	A0007935	TK0901 20 T, Hacksaw HF/12RB, 300 mm	EA	1
TX2005	A0014977	TK0901 Ball Pein Hammer with Fibreglass Handle, 25232, 900g	EA	1
SK0070	A0012538	TK0901 Chipping Hammer with Spring Handle (Straight)	EA	1
MX0251	A0011005	TK0901 Trimming Knife with Retractable Blade, 99E, SX-75	EA	1
HS0920	C0000584	TK0901 Brass Key to Differ Padlock 264, 38 mm, 3 Keys	EA	1
MX0170	Z0000077	TK0901 Combination Plier with Insulated Handle, 1000V, 200 mm	EA	1
MX0190	A0010996	TK0901 Vice Grip Plier, D1-20, 250 mm	EA	1
RD0010	A0012021	TK0901 Round Centre Punch, 117E, 150 mm	EA	1
WR0119	A0015340	TK0901 Mechanic Blackpoint Screwdriver, 6021, 10 x 250 mm	EA	1
JB0011	A0008343	TK0901 Deep Offset Combination Spanner, CV, 17 mm	EA	1
JB0013	A0008345	TK0901 Deep Offset Combination Spanner, CV, 19 mm	EA	1
JB0018	A0008350	TK0901 Deep Offset Combination Spanner, CV, 24 mm	EA	1
JB0020	A0008352	TK0901 Deep Offset Combination Spanner, CV, 26 mm	EA	1
JB0021	A0008353	TK0901 Deep Offset Combination Spanner, CV, 27 mm	EA	1
JB0024	A0008356	TK0901 Deep Offset Combination Spanner, CV, 30 mm	EA	1
GD0368	A0006722	TK0901 Double Open End Spanner, No. 6, 18 x 19 mm	EA	2
GD3672	A0007484	TK0901 Double Open End Spanner, No. 6, 24 x 26 mm	EA	2
RB0190	A0011940	TK0901 Combination Square, F7505 KH445, 300 mm	EA	1
RA0500	A0011908	TK0901 Metric Rafter Square, 50 x 600 mm	EA	1
MX0400	A0011077	TK0901 Rubber Case Measuring Tape, 16 mm x 3 m	EA	1
MX0540	A0011116	TK0901 5 Tray Canilever Toolbox, 550 x 207 x 226 mm	EA	1
MX0454	A0011092	TK0901 Heavy-Duty Adjustable Shifter Wrench, 300 mm	EA	1
JL0203	A0002103	TK0901 Heavy-Duty Pipe Wrench, 350 mm	EA	1



21 Piece Carpenters Aide Toolkit

Stock Code	System Code	Description	Uom	Qty
MS1300	A0014830	Backsaw, 300 mm	EA	1
MS0060	A0010261	2 Pouch Leather Nail Bag	EA	1
A0004434	A0004434	Wrecking Bar, 19 x 600 mm	EA	1
MX0475	A0011103	Chalk Line, Zinc Alloy Case, 30 m	EA	1
RA0200	A0011896	4 Piece Wood Chisel	EA	1
MX3600	A0011185	20 T Hacksaw Frame 300 mm	EA	1
TX2002	A0014974	Ballpein Hammer with Fibreglass Handle, 25216, 500g	EA	1
TX2003	A0014975	Ballpein Hammer with Fibreglass Handle, 2524, 700g	EA	1
MX0261	A0011011	3 Vile Aluminium Spirit Level, 600 mm	EA	1
HS0920	A0000584	Brass Key to Differ Padlock, 264, 38 mm, 3 Keys	EA	1
SN0209	A0014037	Smooth Plain Handyman, 1-12-164, 245 x 50 mm	EA	1
LS0210	A0009420	Hand Saw with Plastic Handle, FG01730, 600 x 8 pts	EA	1
MX0110	A0010979	6 Piece Blackpoint Screwdriver Set, 10001	EA	1
RB0190	A0011940	Combination Square, F7505 KH445, 300 mm	EA	1
SN0650	A0014074	Metric Rafter Square, 45-530, 400 x 600 mm	EA	1
SN0655	A0014077	Tri/Mitre Steel Square, 46-508, 200 mm	EA	1
MX0405	A0010078	Chrome Case Measuring Tape, 19 mm x 5 m	EA	1
MX0415	A0011082	Rubber Case Measuring Tape, 13 mm x 20 m	EA	1
GW0002	A0008094	Straight Handle Tinsnip, G245/12, 300 mm	EA	1
CT0051	A0005595	1 Tray, 2 Slot Artisans Trunk, 1180, 650 x 275 x 275 mm	EA	1



C0000584



A0005595



A0011082



A0014974



A0008094



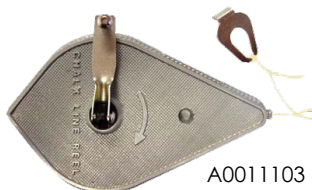
A0010520



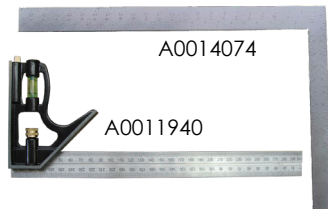
A0014975



A0004434



A0011103



A0014074



A0009420



A0011896



A0011078



A0011185



A0010261



A0011078



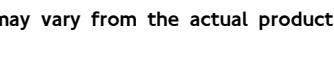
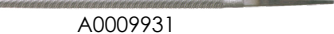
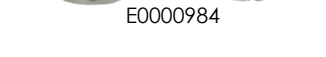
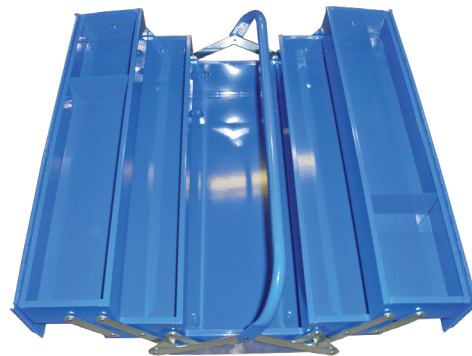
A0010979



SN0209

39 Piece Electrician Toolkit

Stock Code	System Code	Description	Uom	Qty
AT0250	A0004455	Tommy Bar, 19 x450 mm	EA	1
AT0037	A0004422	Cold Flat Chisel, 19 x 200 mm	EA	1
MF0620	A0009985	Plastic Handle for File, 75 mm	EA	1
MF0101	A0009931	2nd Cut Round File, 150 mm	EA	1
TX2003	A0014975	Ballpein Hammer with Fibreglass Handle, 25224, 700g	EA	1
MX0250	A0011004	Trimming Knife with a Fixed Blade, SX-79-1	EA	1
BW0320	A0005134	Digital Multimeter 1000V AC/DC, Tru RMS, RS232, TNB812	EA	1
HS0920	C0000584	Brass Key to Differ Padlock, 264, 38 mm, 3 Keys	EA	1
MX0170	A0010992	Combination Plier with Insulated Handle, 1000V, 200 mm	EA	1
BW0407	A0005146	Crimping Ratchet Plier, HD16UT, 1.5-16 mm (Uninsulated)	EA	1
MX0181	A0010995	Diagonal Cutter Plier with Insulated Handle, 1000V, 190 mm	EA	1
MX0166	A0010991	Long Nose Plier with Insulated Handle, 200 mm	EA	1
MX0190	A0010996	Vice Grip Plier DI-20, 250 mm	EA	1
MX0195	A0010997	Curved Jaw Wawerpump Plier, 250 mm	EA	1
WR0123	A0015344	Blackpoint Screwdriver 6029, PH-No. 1 x 80 mm	EA	1
WR0124	A0015345	Blackpoint Screwdriver 6030, PH-No. 2 x 100 mm	EA	1
WR0101	A0015324	Electrician Blackpoint Screwdriver, 6001, 3.5 x 75 mm	EA	1
WR0018	A0015317	Mechanic Blackpoint Screwdriver, 6015, 6.5 x 200 mm	EA	1
WR0118	WR00118	Mechanic Blackpoint Screwdriver, 6020, 10 x 200 mm	EA	1
A000833	A0008336	Deep Offset Combination Spanner, CV, 10 mm	EA	2
JB0005	A0008337	Deep Offset Combination Spanner, CV, 11 mm	EA	2
JB0006	A0008338	Deep Offset Combination Spanner, CV, 12 mm	EA	2
JB0007	A0008339	Deep Offset Combination Spanner, CV, 13 mm	EA	2
JB0011	A0008343	Deep Offset Combination Spanner, CV, 17 mm	EA	2
JB0013	A0008345	Deep Offset Combination Spanner, CV, 19 mm	EA	2
GR1502	GR1502	Tube Spanner, BW10-11, 10 x 11 mm	EA	1
GR1503	A0007972	Tube Spanner, BW12-13, 12 x 13 mm	EA	1
GR1505	A0007974	Tube Spanner, BW16-17, 16 x 17 mm	EA	1
NT0006	E0000984	Clear Safety Spectacles, SN180C	EA	1
MG0610	A0010034	Voltage Tester DCVF! & Torchcat111 1000V	EA	1
MX0540	A0011116	5 Tray Cantilever Toolbox, 550 x 207 x 226 mm	EA	1
MX0451	A0011089	Heavy-Duty Adjustable Shifter Wrench, 150 mm	EA	1
MX0454	A0002087	Heavy-Duty Adjustable Shifter Wrench, 300 mm	EA	1



TOOLKITS AND ASSORTMENTS

44 Piece Apprentice Electrician Toolbox

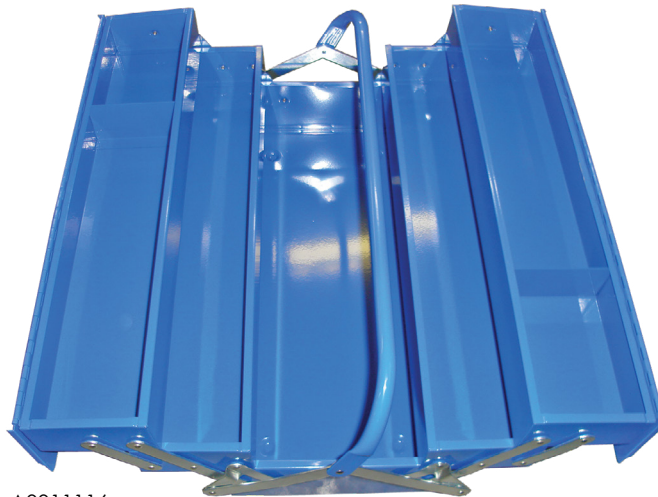
Stock Code	System Code	Description	Uom	Qty
AT0032	A0004417	Cold Flat Chisel, 13 x 150 mm	EA	1
AT0037	A0004422	Cold Flat Chisel, 19 x 200 mm	EA	1
AT0040	A0004425	Cold Flat Chisel, 25 x 300 mm	EA	1
GR0201	A0007903	Spring Divider, DD/4, 100 mm	EA	1
MX0125	A0010982	Nut Driver, No. SD10-125, 10 mm	EA	1
PE0095	E0002938	Large Corder Earplugs, No. 304, 1000106	EA	1
A0009987	A0009987	Plastic Handle for File, 125 mm	EA	2
MF0623	A0009986	Plastic Handle for File, 100 mm	EA	1
MF0620	A0009985	Plastic Handle for File, 75 mm	EA	1
MF0011	A0009897	Second Cut Flat File, 150 mm	EA	1
MF0004	A0009895	Bastard Cut Flat File, 300 mm	EA	1
MF0084	A0009923	Smooth Cut Hald Round File, 300 mm	EA	1
MF0103	A0009933	Second Cut Round File, 250 mm	EA	1
MX3600	A0011185	20T Hacksaw Frame, 300 mm	EA	1
TX2003	A0014975	Ballpein Hammer with Fibreglass Handle, 25224, 700g	EA	1
TX2005	A0014977	Soffface Hammer with Fibreglass Handle, 65340, 40 mm	EA	1
MX0251	A0011005	Trimming Knife with Retractable Blade, 99E, SC-75	EA	1
RA0030	A0011866	Vial Torpedo/Boat 2 Level, 230 mm	EA	1
BW0320	A0005134	Digital Multimeter 1000V, AC/DC, Tru RMS, RS232, TMB812	EA	1
HS0920	Z0000265	Brass Key to Differ Padlock, 264, 38 mm, 3 Keys	EA	1
BW0440	A0005160	Cable Cutting Plier, CC325: Cactus	EA	1
MX0170	A0010992	Combination Plier with Insulated Handle, 1000V, 200 mm	EA	1
BW0407	A0005146	Crimping Ratchet Plier, HD16UT, 1.5-16 mm (Uninsulated)	EA	1
MX0181	A0010995	Diagonal Cutter Plier with Insulated Handle, 1000V, 190 mm	EA	1
MX0166	A0010991	LongNose Plier with Insulated Handle, 200 mm	EA	1
MX0190	A0010996	Vice Grip Plier, DI-20, 250 mm	EA	1
MX0195	A0010997	Curved Jaw Waterpump Plier, 250 mm	EA	1
MX0197	A0010998	Curved Jaw Waterpump Plier, 300 mm	EA	1
RD0005	A0012019	Square Centre Punch, 351C, 100 mm	EA	1
MX0471	A0011099	Stainless Steel Measuring Rule, 300 mm	EA	1
MX0110	A0010979	6 Piece Blackpoint Screwdriver Set, 10001	EA	1
GR0900	A0007939	Engineers Scribe, MS/-ST, E222, 190 mm	EA	1
JB0037	A0008364	18 Piece Deep Offset Combination Spanner Set, CV, 6-24 mm	EA	1
GR1512	A007980	8 Piece Tube Spanner Set No. 9, 8-22 mm	EA	1
NT0006	E0000984	Clear Safety Spectacles, SN180C	EA	1
GR0010	A0007887	Enginers Square, WS Grade, SS-4, 100 mm	EA	1
RA0070	A0007887	Automatic Wire Stripper, B Blade	EA	1
MX0400	A0011877	Rubber Case Measuring Tape, 16 mm x 3 m	EA	1
MG0610	A0010034	Voltage Tester, DCVF1 7 Torchcat111, 1000V	EA	1
MX0540	A0011116	5 Tray Cantilever Toolbox, 550 x 207 x 226 mm	EA	1
JT0020	A0008490	9 Piece Hex Key Wrench Set, PS-B9, 1.5-10	EA	1
JT0022	A0008491	9 Piece Hex Key Wrench Set, PS-B9IN, 1-16-3/8"	EA	1
MX0453	A0011091	Heavy-Duty Adjustable Shifter Wrench. 250 mm	EA	1



A0011077



C0000584



A0011116



A0010979



A0010982



A0004417



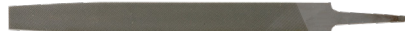
A0004422



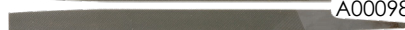
A0004425



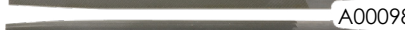
A0012019



A0009897



A0009895



A0009923



A0009933



A0009987

A0009986

A0009985



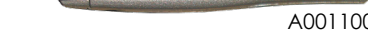
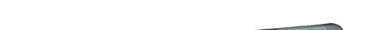
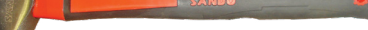
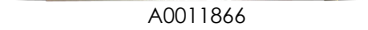
A0007939



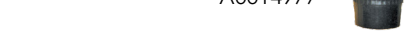
A0011099



A0007887



A0011866



A0014975



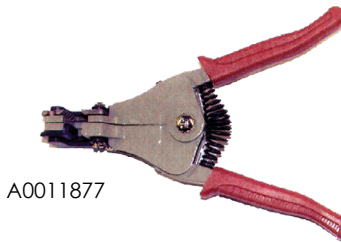
A0014977



A0011185



A0011005



A0011877



A0011877



A0010992



A0010995



A0010991



A0010997



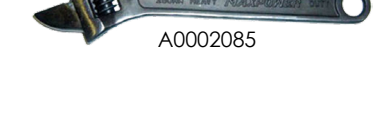
A0010998



A0010996



A0005160



A0002085



A0008364



A0007980



A0008490



A0008491



A0010034



A0005134



E0000984



E0002938

44 Piece Apprentice Electrician Toolbox

Stock Code	System Code	Description	Uom	Qty
AT0250	A0004455	Tommy Bar, 19 x 450 mm	EA	1
AT0037	A0004422	Cold Flat Chisel 19 x 200 mm	EA	1
A0009987	A0009987	Plastic Handle dor File, 125 mm	EA	1
MF0102	A0009932	2nd Cut Round File 200 mm	EA	1
TX2005	A0014977	Ballpein Hammer Fibreglass Handle, 25232, 900 g	EA	1
MX0251	A0011005	Trimming Knife with Retractable Blade, 99E, SX-75	EA	1
HS0920	C0000584	Brass Key Padlock to Differ, 264, 38 mm, 3 Keys	EA	1
MX0170	A0010992	Combination Plier wit Insulated Handle, 1000V, 200 mm	EA	1
BW0407	A0009146	Crimping Ratchet Plier, HD16UT, 1.5-16 mm (Uninsulated)	EA	1
MX0181	A0010995	Diagonal Cutter Plier with Insulated Handle, 1000V, 190 mm	EA	1
MX0166	A0010991	Long Nose Plier with Insulated Handle, 200 mm	EA	1
MX0190	A0010996	Viece Grip Plier, DI20, 250 mm	EA	1
MX0195	A0010997	CurvedJaw Waterpump Plier, 250 mm	EA	1
WR0123	A0015344	Blackpoint Screwdriver, 6029, PH.No. 1 x 80 mm	EA	1
WR0124	A0015345	Blackpoint Screwdriver, 6030, PH-No. 2 x 100 mm	EA	1
WR0102	A0015325	Blackpoint Electrician Screwdriver, 6002, 3.5 x 100 mm	EA	1
WR0018	A0015317	Blackpoint Mechanic Screwdriver, 6015, 6.5 x 200 mm	EA	1
WR0118	WR0118	Blackpoint Mechanic Screwdriver, 6020, 10 x 200 mm	EA	1
GR1511	A0007979	4 Piece Tube Spanner Set, TBS2M, 6-13 mm	EA	1
A0008336	A0008336	Deep Offset Combination Spanner, CV, 10 mm	EA	2
JB0005	A0008337	Deep Offset Combination Spanner, CV, 11 mm	EA	2
JB0006	A0008338	Deep Offset Combination Spanner, CV, 12 mm	EA	2
JB0007	A0083339	Deep Offset Combination Spanner, CV, 13 mm	EA	2
JB0008	A0008340	Deep Offset Combination Spanner, CV, 14 mm	EA	2
JB0009	A0008341	Deep Offset Combination Spanner, CV, 15 mm	EA	2
NT0006	E0000984	Clear Safety Spectacles, SN180C	EA	1
MG0610	A0010034	Voltage Tester, DCVF1 & Torchcat111, 1000V	EA	1
MX0540	A0011116	5 Tray Cantilever Toolbox, 500 x 207 x 226 mm	EA	1
MX0451	A0011089	Heavy-Duty Adjustable Shifter Wrench, 150 mm	EA	1
MX0454	A0002087	Heavy-Duty Adjustable Shifter Wrench, 300 mm	EA	1



TOOLKITS AND ASSORTMENTS

23 Piece Tradesman Electrician Toolkit

Stock Code	System Code	Description	Uom	Qty
MX3600	A0011185	20 T Hacksaw Frame, 300 mm	EA	1
TX2005	A0014977	Ballpein Hammer with Fibreglass Handle, 25232, 900 g	EA	1
MX0251	A0011005	Trimming Knife wit Retractable Blade, 99E, SX-75	EA	1
HS0920	C0000584	Brass Key to Differ Padlock, 264, 38 mm, 3 Keys	EA	1
MX0170	MX0170	Combination Plier with Insulated Handle, 1000V, 200 mm	EA	1
BW0407	A0005146	Crimping Ratchet Plier, HD16UT, 1.5-16 mm (Uninsulated)	EA	1
MX0181	A0010995	Diagonal Cutter Plier with Insulated Handle, 1000V, 190 mm	EA	1
MX0180	A0010994	Diagonal Nipper Plier with Insulated Handle, 150 mm	EA	1
MX0190	A0010996	Vice Grip Plier, DI-20, 250 mm	EA	1
MX0195	A0010997	Blackpoint Electrician Screwdriver, 6006, 4 x 150 mm	EA	1
WR0105	A0015328	Blackpoint Electrician Screwdriver, 6009, 5.5 x 150 mm	EA	1
WR0107	A0015330	Blackpoint Mechanic Screwdriver, 6017, 8 x 200 mm	EA	1
WR0115	A0015337	Deep Offset Combination Spanner, CV, 10 mm	EA	1
A000833	A0008336	Deep Offset Combination Spanner, CV, 11 mm	EA	1
JB0005	A0008337	Deep Offset Combination Spanner, CV, 12 mm	EA	1
JB0006	A0008338	Deep Offset Combination Spanner, CV, 13 mm	EA	1
JB0007	A0008339	Deep Offset Combination Spanner, CV, 14 mm	EA	1
JB0013	A0008345	Deep Offset Combination Spanner, CV, 19 mm	EA	1
MX0535	A0011115	3 Tray Canilever Toolbox, 550 x 230 x 160 mm	EA	1
JT0020	A0008490	9 Piece Hex Key Wrench Set, PS-B9, 1.5-10	EA	1
JT0022	A0008491	9 Piece Hex Key Wrench Set, PS-B9IN, 1/16-1/8"	EA	1
MX0452	A0011090	Heavy-Duty Adjustable Shifter Wrench, 200 mm	EA	1
MX0454	A0011092	Heavy-Duty Adjustable Shifter Wrench, 300 mm	EA	1



C0000584



A0011115



A0008490



A0008491



A0010992



A0010995



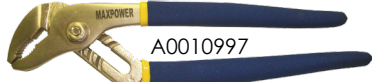
A0010994



A0011877



A0010996



A0010997



A0015328



A0015330



A0015337



A0011185



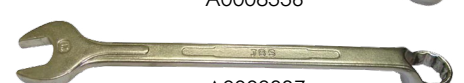
A0014977



A0011005



A0008336



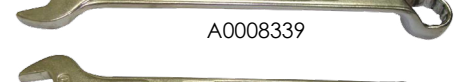
A0008337



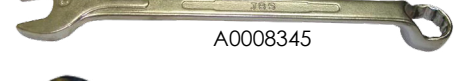
A0008338



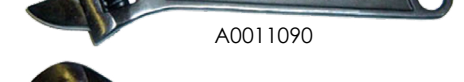
A0008339



A0008345



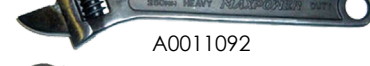
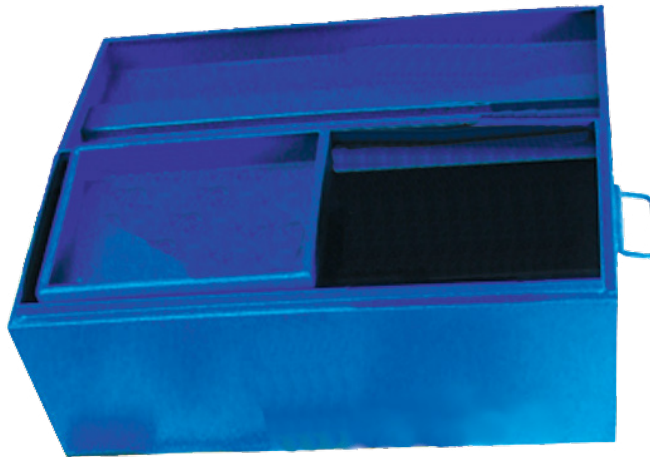
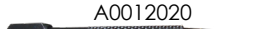
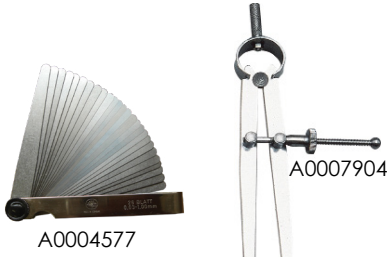
A0011090



A0011092

23 Piece Tradesman Electrician Toolkit

Stock Code	System Code	Description	Uom	Qty
QC0000	A0011809	Metric Vernier Caliper, 150 x 0.02 mm (Graduation)	EA	1
AT0032	A0004417	Cold Flat Chisel, 13 x 150 mm	EA	1
AT0037	A0004422	Cold Flat Chisel, 19 x 200 mm	EA	1
AT0039	A0004424	Cold Flat Chisel, 25 x 250 mm	EA	1
GR0202	A0007904	Spring Divider, DD/6, 150 mm	EA	1
PE0095	E0002933	Large Corded Earplug No. 304, 1000106	EA	1
MS0320	A0010338	3 Piece Packing Extractor Set	EA	1
MF0300	A0009978	13 Piece Assorted File Set with Bag and Handles	EA	1
BK0102	A0004577	26 Blade Feeler Gauge, 1590 m	EA	1
MX3600	A0011185	20T Hacksaw Frame, 300 mm	EA	1
TX2003	A0014975	Ballpein Hammer with Fibreglass Handle, 25224, 700 g	EA	1
LS0124	A0009379	Ballpein Hammer with Wood Handle, FG04185, 200 g	EA	1
TX2005	A0014977	Softface Hammer with Fibreglass handle, 65340, 40 mm	EA	1
MX0251	A0011005	Trimming Knife with Retractable Blade, 99E, SX-75	EA	1
RA0030	A0011866	Boat 2 Vial Torpedo Level, 230 mm	EA	1
HS0920	Z0000265	Brass Key to Differ Padlock, 264, 38 mm, 3 Keys	EA	1
MX0151	A0010985	Inside Straight Circlip Plier, 180 mm	EA	1
MX0153	A0010987	Outside Straight Circlip Plier, 180 mm	EA	1
MX0161	A0010989	Heavy-Duty Fencing Plier, 300 mm	EA	1
MX0190	A0010996	Vice Grip Plier, DI-20, 250 mm	EA	1
MX0195	A0010997	Curved Jaw Waterpump Plier, 250 mm	EA	1
RD0005	A0012019	Square Centre Punch, 351C, 100 mm	EA	1
RD0006	A0012020	Prick Punch, 816C, 100 mm	EA	1
MX0470	A0011098	Stainless Steel Measuring Rule, 150 mm	EA	1
MX0471	A0011099	Stainless Steel Measuring Rule, 300 mm	EA	1
MX0110	A0010979	6 Piece Blackpoint Screwdriver Set, 10001	EA	1
GR0900	A0007939	Engineers Scriber, MS/-ST, E222, 190 mm	EA	1
TX0110	A0014929	24 Piece 1/2" Socket Set, DR, HS004070, 8-32 mm	EA	1
JB0037	A0008364	18 Piece Combination Spanner Set, CV, 6-24 mm	EA	1
JB0007	A0008339	Deep Offset Combination Spanner Set, 13 mm	EA	1
JB0011	A0008343	Deep Offset Combination Spanner Set, 17 mm	EA	1
JB0013	A0008345	Deep Offset Combination Spanner Set, 19 mm	EA	1
JB0018	A0008350	Deep Offset Combination Spanner Set, 24 mm	EA	1
JB0024	A0008356	Deep Offset Combination Spanner Set, 30 mm	EA	1
NT0006	E0000984	Clear Safety Spectacles, SN180C	EA	1
GR0010	A0007887	Engineers Square, WS Grade, SS/4, 100 mm	EA	1
MX0407	A0011079	Rubber Case Measuring Tape, 25 mm x 5 mm	EA	1
GW0001	A0008093	Straight Handle Tinsnip, G245/10, 250 mm	EA	1
CT0050	A0005594	1 Tray No Slot Artisans Trunk, 1181, 650 x 275 x 275 mm	EA	1
JT0020	A0008093	9 Piece Hex Key Wrench Set, PS-B9, 1.5-10	EA	1
JT0022	A0005594	9 Piece Hex Key Wrench Set, PS-B9IN, 1/16-3/8"	EA	1
MX0454	A0008490	Heavy-Duty Adjustable Shifter Wrench, 300 mm	EA	1
JL0203	A0002103	Heavy-Duty Pipe Wrench, 350 mm	EA	1
JL0204	A0002104	Heavy-Duty Pipe Wrench, 450 mm	EA	1
JL0220	A0008467	Podger Ratchet Wrench, 17 x 19 mm	EA	1
JL0230	A0008469	Podger Ratchet Wrench, 24 x 30 mm	EA	1



TOOLKITS AND ASSORTMENTS

44 Piece Apprentice Electrician Toolbox

Stock Code	System Code	Description	Uom	Qty
AT0250	A0004455	Tommy Bar, 19 x 45 mm	EA	1
AT0032	A0004417	Cold Flat Chisel, 13 x 150 mm	EA	1
AT0037	A0004422	Cold Flat Chisel, 19 x 200 mm	EA	1
MF0014	A0009900	2nd Cut Flat File, 300 mm	EA	1
MF0074	A0009918	2nd Cut Half Round File, 300 mm	EA	1
GR1340	A0007963	Lever Type Grease Gun, GIR, 400 g	EA	1
MX3600	A0011185	20T Frame Hacksaw, 300 mm	EA	1
TX2003	A0014975	Ballpein Hammer with Fibreglass Handle , 25224, 700 g	EA	1
MX0251	A0011005	Trimming Knife with Retractable Blade, 99E, SX-75	EA	1
HS0920	C0000584	Brass Key to Differ Padlock , 264, 38 mm, 3 Keys	EA	1
MX0160	A0010988	Heavy-Duty Fencing Plier, 250 mm	EA	1
MX0190	A0010996	Vice Grip Plier, DI20, 250 mm	EA	1
MX0195	A0010997	Curved Jaw Waterpump Plier, 250 mm	EA	1
RD0010	A0012021	Round Centre Punch, 117E, 150 mm	EA	1
WR0027	A0015320	Mechanic Blackpoint Screwdriver, 6022, 10 x 300 mm	EA	1
A0008336	A0008336	Deep Offset Combination Spanner, CV, 10 mm	EA	1
JB0024	A0008356	Deep Offset Combination Spanner, CV, 30 mm	EA	1
GD0367	A0006721	Double Open End Spanner, No. 6, 17 x 19 mm	EA	1
GD0368	A0006722	Double Open End Spanner, No. 6, 18 x 19 mm	EA	2
GD3672	A0007484	Double Open End Spanner, No. 6, 24 x 26 mm	EA	2
MX0540	A0011116	5 Tray Cantilever Toolbox , 550 x 207 x 226 mm	EA	1
JT0020	A0008490	9 Piece Hex Key Wrench Set, PS-B9, 1.5-10	EA	1
JT0022	A0008491	9 Piece Hex Key Wrench Set, PS-B9IN, 1/16-3/8"	EA	1
MX0454	A0002087	Heavy-Duty Adjustable Shifter Wrench, 300 mm	EA	1
MX0455	A0002088	Heavy-Duty Adjustable Shifter Wrench, 375 mm	EA	1
JL0203	A0002103	Heavy-Duty Pipe Wrench, 350 mm	EA	1



A0008490



A0008491



A0011116



C0000584



A0012021



A0004417



A0004422



A0004455



A0014977



A0010988



A0010996



A0010997



A0007963



A0009900



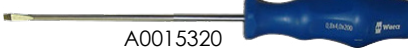
A0009918



A0011005



A0011185



A0015320



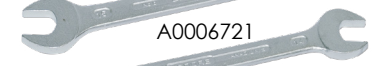
A0008336



A0008356



A0006721



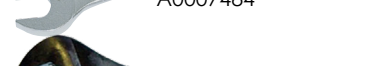
A0006722



A0007484



A0011092



A0002088



A0002103

27 Piece Aide Toolkit

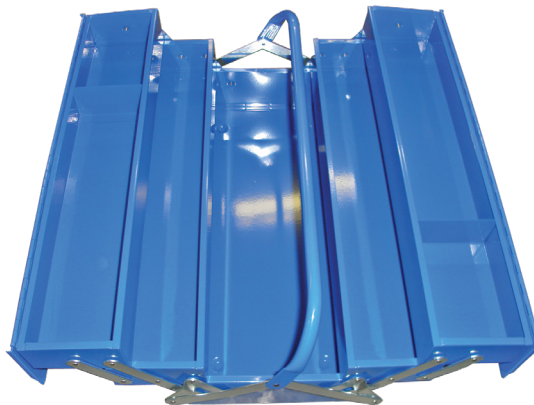
Stock Code	System Code	Description	Uom	Qty
AT0250	A0004455	Tommy Bar, 19 x 45 mm	EA	1
AT0032	A0004417	Cold Flat Chisel, 13 x 150 mm	EA	1
AT0037	A0004422	Cold Flat Chisel, 19 x 200 mm	EA	1
MF0014	A0009900	2nd Cut Flat File, 300 mm	EA	1
MF0074	A0009918	2nd Cut Half Round File, 300 mm	EA	1
GR1340	A0007963	Lever Type Grease Gun, GIR, 400 g	EA	1
MX3600	A0011185	20T Frame Hacksaw, 300 mm	EA	1
TX2003	A0014975	Ballpein Hammer with Fibreglass Handle , 25224, 700 g	EA	1
MX0251	A0011005	Trimming Knife with Retractable Blade, 99E, SX-75	EA	1
HS0920	C0000584	Brass Key to Differ Padlock , 264, 38 mm, 3 Keys	EA	1
MX0160	A0010988	Heavy-Duty Fencing Plier, 250 mm	EA	1
MX0190	A0010996	Vice Grip Plier, DI20, 250 mm	EA	1
MX0195	A0010997	Curved Jaw Waterpump Plier. 250 mm	EA	1
RD0010	A0012021	Round Centre Punch, 117E, 150 mm	EA	1
WR0119	A0015320	Mechanic Blackpoint Screwdriver, 6022, 10 x 300 mm	EA	1
A0008331	A0008336	Deep Offset Combination Spanner, CV, 10 mm	EA	1
JB0024	A0008356	Deep Offset Combination Spanner, CV, 30 mm	EA	1
GD0367	A0006721	Double Open End Spanner, No. 6, 17 x 19 mm	EA	1
GD0368	A0006722	Double Open End Spanner, No. 6, 18 x 19 mm	EA	2
GD3672	A0007484	Double Open End Spanner, No. 6, 24 x 26 mm	EA	1
MX0540	A0011116	5 Tray Cantilever Toolbox , 550 x 207 x 226 mm	EA	1
JT0020	A0008490	9 Piece Hex Key Wrench Set, PS-B9, 1.5-10	EA	1
JT0022	A0008491	9 Piece Hex Key Wrench Set, PS-B9IN, 1/16-3/8"	EA	1
MX0454	A0002087	Heavy-Duty Adjustable Shifter Wrench, 300 mm	EA	1
MX0455	A0002088	Heavy-Duty Adjustable Shifter Wrench, 375 mm	EA	1
JL0203	A0002103	Heavy-Duty Pipe Wrench, 350 mm	EA	1



A0008490



A0008491



A0011116



C0000584



A0012021



A0004417



A0004422



A0004455



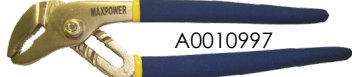
A0014977



A0010988



A0010996



A0010997



GR1340



A0009900



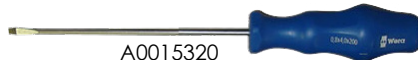
A0009918



A0011005



A0011185



A0015320



A0008336



A0008356



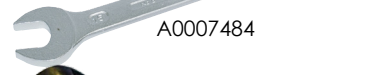
A0006721



A0006722



A0007484



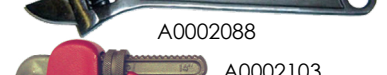
A0011092



A0002088



A0002103



A0002103

43 Piece Instrument Technician Toolkit				
Stock Code	System Code	Description	Uom	Qty
SN0078	A0013998	Tube Cutter, 93-020, 3-30 mm	EA	1
WH0010	A0015251	7 Piece Nut Driver No. 265K6, 2.5-5.5 mm	EA	1
PE0095	E0002938	Large Corded Earplug, No. 3045, 1000106	EA	1
A0009987	A0009987	Plastic Handle for File, 125 mm	EA	2
MF0623	A0009986	Plastic Handle for File, 100 mm	EA	1
MX0120	A0010981	10 Piece Needle File Set, 140 mm	EA	1
MF0004	A0009895	Bastard Cut Flat File, 300 mm	EA	1
MF0084	A0009923	Smooth Cut Half Round File, 300 mm	EA	1
MF0103	A0009933	2nd Cut Round File, 250 mm	EA	1
MX3600	A0011185	20T Frame Hacksaw, 300 mm	EA	1
LS0124	A009379	Ballpein Hammer with Wood handle, FG04185, 200 g	EA	1
MX0251	A0011005	Trimming Knife with retractable Blade, 99E, SX-75	EA	1
BW0320	A0005134	Digital Multimeter, 1000V AC/DC, Tru RMS, RS232, TMB812	EA	1
HS0920	C0000584	Brass Key to Differ Padlock, 264, 38 mm, 3 Keys	EA	1
CR0045	A005585	Bent Nose Plier (Insulated) 888-6C, 150 mm: Crescent	EA	1
MX0151	Z0000031	Inside Straight Circlip Plier, 180 mm	EA	1
MX0153	A0010989	Outside Straight Circlip Plier, 180 mm	EA	1
MX0170	A0010992	Combination Plier with Insulated Handle, 1000V, 200 mm	EA	1
BW0410	A0005146	Crimping Bootlace Ferrule Plier, YAC5, 0.5-6 mm	EA	1
MX0180	A0010994	Diagonal Nipper Plier with Insulated Handle, 150 mm	EA	1
MX0165	A0010990	Long Nose Plier with Insulated Handle, 150 mm	EA	1
MX0190	A0010996	Vice Grip Plier, DI-20, 250 mm	EA	1
MX0195	A0010997	Curved Jaw Waterpump Plier, 250 mm	EA	1
RD0005	A0012019	Square Centre Punch, 351C, 100 mm	EA	1
MX0471	A0011099	Stainless Steel Measuring Rule, 300 mm	EA	1
GR0822	A0007937	Junior Hacksaw Saw, JHF4/14J, 150 mm	EA	1
MX0110	A0010979	6 Piece Blackpoint Screwdriver, 10001	EA	1
WH0100	A0015252	6 Piece Screwdriver Set, No. 260K6	EA	1
GR0900	A0007939	Engineers Scriber, MS/-ST, E222, 190 mm	EA	1
RX0010	A0012241	Port Tech Gas, Soldering Iron	EA	1
JB0037	A0008364	18 Piece Deep Offset Combination Spanner Set, CV, 6-24 mm	EA	1
GR1526	A0007981	6 Piece Tube Spanner Set, No. 53B, 0-10BA	EA	1
GR1511	A0007979	4 Piece Tube Spanner Set, TBS2M, 6-13 mm	EA	1
NT0006	E0000984	Clear Safety Spectacles, SN180C	EA	1
GR0010	A0007887	Engineers Square, WS Grade, SS/4, 100 mm	EA	1
RA0070	A0011877	Automatic Stripper Wire, B Blade	EA	1
MX0400	A0011877	Rubber Case Measuring Tape, 16 mm x 3 m	EA	1
MX0540	A0011116	5 Tray Cantilever Toolbox, 550 x 207 x 226 mm	EA	1
JT0020	A0008490	9 Piece Hex Key Wrench Set, PS-B9, 1.5-10	EA	1
JT0022	A0008491	9 Piece Hex Key Wrench Set, PS-B9IN, /16-3/8"	EA	1
MX0451	A0011089	Heavy-Duty Adjustable Shifter Wrench, 150 mm	EA	1
MX0453	A0011091	Heavy-Duty Adjustable Shifter Wrench, 200 mm	EA	1



C0000584



A0011877



A0011116



A0005134



A0009895



A0009923



A0009933



A0009986

A0009987



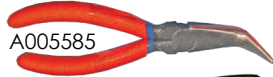
A0010994



A0010990



A0010992



A005585



Z0000031



A0010989



A0010996



A0010997



A0005146



A0011877



E0000984



A0008364



A0007981



A0007979



A0015251



A0010981



A0015252



A0010979



A0011089



A0002085



A0013998



A0011185



A0007937



A0011005



A0012241



A0007887



A0011099



A0007939



A0012019



A0009379



A0008490



A0008491



E0002938

48 Piece Instrument Technician Toolkit

Stock Code	System Code	Description	Uom	Qty
MS0050	A0010256	Canvas File Bag, 13 File Capacity	EA	1
GR0151	A0007897	Outside Spring Caliper, OD/4, 100 mm	EA	1
GR0152	A0007898	Outside Spring Caliper, OD/6, 150 mm	EA	1
GR0201	A0007903	Spring Divider, DD/4, 100 mm	EA	1
GR0202	A0007904	Spring Divider, DD/6, 150 mm	EA	1
JL1000.	JL1000.	File Brush, 463, 115 x 40 mm	EA	1
A0009987	A0009987	Plastic handle for File, 75 mm	EA	2
MF0623	A0009986	Plastic handle for File, 100 mm	EA	1
MF0620	A0009985	Plastic handle for File, 125 mm	EA	1
MF0011	A0009897	2nd Cut Flat File, 150 mm	EA	1
MF0014	A0009900	2nd Cut Flat File, 300 mm	EA	1
MF0004	A0009895	Bastard Cut Flat File, 300 mm	EA	1
MF0074	A0009918	2nd Cut Half Round File, 300 mm	EA	1
MF0103	A0009933	2nd Cut Round File, 250 mm	EA	1
MF0212	A0009973	Slim Taper File, 150 mm	EA	1
MF0132	A0009947	2nd Cut Square File, 200 mm	EA	1
MX3600	A0011185	20T Frame Hacksaw, 300 mm	EA	1
SD0216	A0016365	Ballpein Hammer with Fibreglass handle, 25216, 500 g	EA	1
LS0124	A0009379	Ballpein Hammer with Wood Handle, FG04185, 200 g	EA	1
HS0920	C0000584	Brass Keyed Different Padlock, 264, 38 mm, 3 Keys	EA	1
MX0170	A0010992	Combination plier with Insulated Handle, 1000V, 200 mm	EA	1
BW0407	A0005146	Crimping Ratchet Plier, HD16UT, 1.5-16 mm (Uninsulated)	EA	1
MX0180	A0010994	Diagonal Nipper Plier with Insulated Handle, 150 mm	EA	1
EL0000	A0005880	Gas Plier, PA78, 200 mm	EA	1
HW0006	A0008211	Long Nose Bent Plier A3 36, 200 mm	EA	1
MX0165	A0010990	Long Nose Plier with Insulated Handle, 150 mm	EA	1
MX0195	A0010997	Curved Jaw Waterpump plier, 250 mm	EA	1
RD0010	A0012021	Round Centre Punch, 117E, 150 mm	EA	1
RD0006	A0012020	Prick Punch 816C, 100 mm	EA	1
MX0471	A0011099	Stainless Steel Measuring Rule, 300 mm	EA	1
GR0822	A0007937	Junior Hacksaw Saw, JHF4,14J, 150 mm	EA	1
MX0110	A0010979	6 Piece Blackpoint Screwdriver Set, 10001	EA	1
RA0050	A0011872	6 Piece Jewellers Screwdriver Set, RT34418	EA	1
JB0035	A0008362	17 Piece Deep Offset Combination Spanner Set, CV, 6-22 mm	EA	1
GR1526	A0007981	6 Piece Tube Spanner Set, No. 53B, 0-10BA	EA	1
GR1511	A0007979	4 Piece Tube Spanner Set, TBS2M 6-13 mm	EA	1
NT0006	E0000984	Clear Safety Spectacles, SN180C	EA	1
RA0070	A0011877	Automatic Wire Stripper, B Blade	EA	1
MX0400	A0011877	Rubber Case Measuring Tape, 16 mm x 3 m	EA	1
GW0000	A0008092	Straight handle Tinsnip, G245/8, 200 mm	EA	1
MX0540	A0011116	5 Tray Cantilever Toolbox, 550 x 207 x 226 mm	EA	1
JT0020	A0008490	9 Piece Hex Key Wrench Set , PS-B9, 1.5-10	EA	1
JT0022	A0008491	9 Piece Hex Key Wrench Set , PS-B9IN, 1/16-3/8"	EA	1
MX0451	A0011089	Heavy-Duty Adjustable Shifter Wrench, 150 mm	EA	1
MX0452	A0011090	Heavy-Duty Adjustable Shifter Wrench, 200 mm	EA	1
MX0453	A0011091	Heavy-Duty Adjustable Shifter Wrench, 250 mm	EA	1
JL0203	A0002103	Heavy-Duty Pipe Wrench, 350 mm	EA	1



A0011877



A0011116



C0000584



A0009897

A0009900

A0009895

A0009918

A0009933

A0009973

A0009947

MF0623 A0009987 A0009985



A0010256



JL1000



A0016365



A0009379



A0011185



A0007937



A0011099



A0012021

A0012020



E0000984



A0010992



A0010990



A0010994



A0008211



A0011877



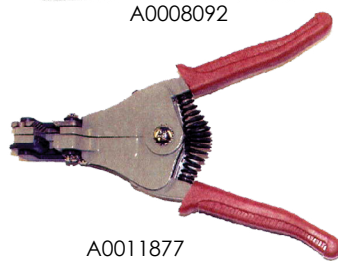
A0010997



A0005880



A0008092



A0011877



A0010979



A0011872



A0007902



A0007904



A0008362



A0007981



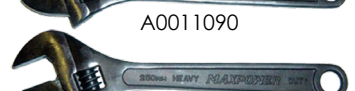
A0007979



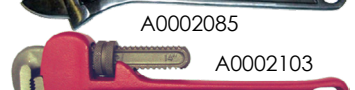
A0011089



A0011090



A0002085



A0002103



A0008490

A0008491

50 Piece Apprentice LOTC Toolkit				
Stock Code	System Code	Description	Uom	Qty
MS0050	A0010256	Canvas File Bag, 13 File Capacity	EA	1
SN0010	SN0010	4 Jaw Ratchet Brace, 02-110, 254 mm	EA	1
GR0102	A0007892	Inside Spring Caliper, ID/6, 150 mm	EA	1
GR0152	A0007898	Outside Spring Caliper, OD/6, 150 mm	EA	1
QC0000	A0011809	Metric Vernier Caliper, 150 x 0.02 mm (Graduation)	EA	1
LS0242	A0009433	Cold Cross Cut Chisel, FG02655, 10 x 20 x 200 mm	EA	1
LS0244	A0009435	Cold Diamond Point Chisel, FG02675, 10 x 20 x 200 mm	EA	1
AT0037	A0004422	Cold Flat Chisel 19 x 200 mm	EA	1
LS0246	A0009437	Cold Round Nose Chisel, FG03685, 10 x 20 x 200 mm	EA	1
GR0200	A0007902	Spring Divider, DD/3, 75 mm	EA	1
GR0202	A0007904	Spring Divider, DD/6, 150 mm	EA	1
MF0300	A0009978	13 Piece Assorted File Set with Bag and handles	EA	1
BK0101	A0004576	20 Blade Feeler Gauge, 1590 m	EA	1
MX3600	A0011185	20T Hacksaw Frame, 300 mm	EA	1
TX2003	A0014975	Ballpein hammer with Fibreglass Handle, 25224, 700 g	EA	1
LS0124	A0009379	Ballpein Hammer with Wood Handle, FG04185, 200 g	EA	1
MS0480	A0010376	Show Knife with Wooden Handle, 100 mm Blade	EA	1
MJ0090	A0010140	General Purpose Multimeter, MT1883	EA	1
HS0920	C0000584	Brass Key to Differ padlock, 264.38 mm, 3 Keys	EA	1
MX0151	Z0000031	Inside Straight Circlip Plier, 180 mm	EA	1
MX0153	A0010989	Outside Straight Circlip Plier, 180 mm	EA	1
MX0170	A0010992	Combination Plier with Insulated handle, 1000V, 200 mm	EA	1
BW0407	A0005146	Crimping Ratchet Plier, HD16UT, 1.5-16 mm (Uninsulated)	EA	1
MX0181	A0010995	Diagonal Cutter Plier with Insulated handle, 1000V, 190 mm	EA	1
EL0000	A0005880	Gas Plier, PA78, 200 mm	EA	1
MX0166	A0010991	Long nose Plier with Insulated Handle, 1000V, 190 mm	EA	1
HW0001	A0008207	Round Nose Plier, A3 25, 160 mm	EA	1
MX0195	A0010997	Curved jaw Waterpump Plier, 250 mm	EA	1
RD0010	A0012021	Round Centre Punch, 117E, 150 mm	EA	1
RD0006	A0012020	Prick Punch, 816C, 100 mm	EA	1
MX0470	A0011098	Stainless Steel Measuring Rule, 150 mm	EA	1
MX0471	A0011099	Stainless Steel measuring Rule, 300 mm	EA	1
GR0822	A0007937	Junior Hacksaw, JHF4/14J, 150 mm	EA	1
MX0115	A0010980	9 Piece Blackpoint Screwdriver Set, 10009	EA	1
GR0900	A0007939	Engineers Scriber, MS/-ST, E222, 190 mm	EA	1
JB0035	A0008362	17 Piece Deep Offset Combination Spanner Set, CV, 6-22 mm	EA	1
GR1511	A0007979	4 Piece Tube Spanner Set, TBS2M, 6-13 mm	EA	1
JB0018	A0008350	Deep offset Combination Spanner, CV, 24 mm	EA	1
JB0024	A0008356	Deep offset Combination Spanner, CV, 30 mm	EA	1
NT0006	E0000984	Clear Safety Spectacles, SN180C	EA	1
GR0010	A0007887	Engineers Square, WS Grade, SS/4, 100 mm	EA	1
RA0070	A0011877	Automatic Wire Stripper, B Blade	EA	1
MX0400	A0011877	Rubber Case Measuring Tape, 16 mm x 3 m	EA	1
MG0610	A0010034	Voltage Tester, DCVF1 & Torchbat111, 1000V	EA	1
GW0001	A0008093	Straight handle Tinsnip, G245/10, 250 mm	EA	1
MX0540	A0011116	5 Tray Cantilever Toolbox, 550 x 207 x 226 mm	EA	1
JT0020	A0008490	9 Piece Hex Key Wrench Set, PS-B9, 1.5-10.9	EA	1
JT0022	A0008491	9 Piece Hex Key Wrench Set, PS-B9IN, 1/16-3/8"	EA	1
MX0453	A0011081	Heavy-Duty Adjustable Shifter Wrench, 250 mm	EA	1
JL0203	A0002103	Heavy-Duty Pipe Wrench, 350 mm	EA	1



C0000584



A0011877



A0011116



A0010140



A0010034



A0009433



A0009435



A0009437



A0012020



A0012021



A0004422



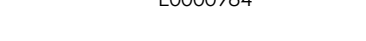
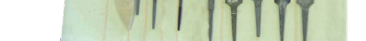
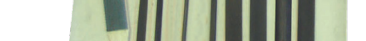
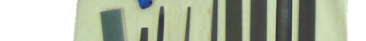
A0007939



A0010376



A0011185



A0010256



E0000984



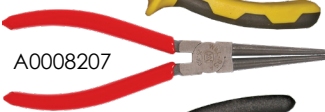
A0010992



A0010991



A0010995



A0008207



Z0000031



A0010989



A0010997



A0005880



A0011877



A0011877



A0008093



A0014977



A0009379



A0007979



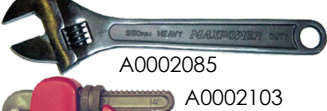
A0008350



A0008356



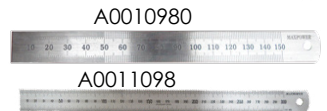
A0008362



A0002085



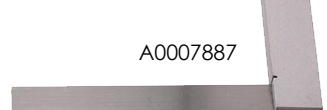
A0002103



A0010980



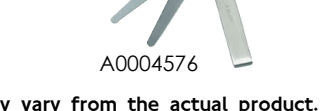
A0011098



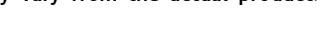
A0011099



A0011866



A0007887



A0004576



A0007898



A0007892



A0007902



A0007904



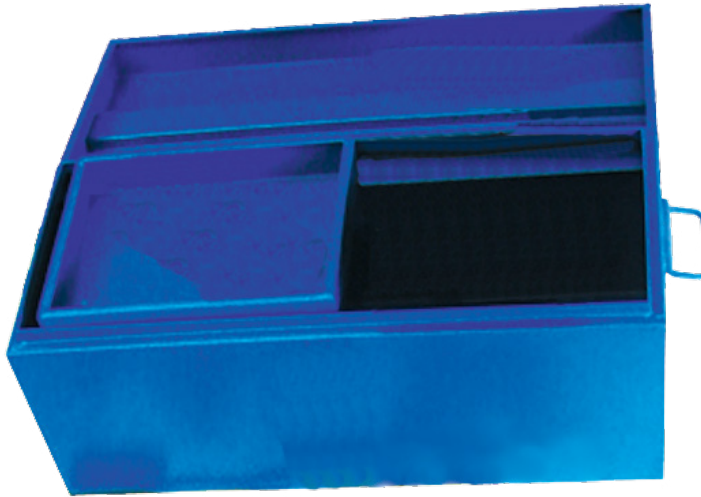
48 Piece Millwright Toolkit				
Stock Code	System Code	Description	Uom	Qty
AT0250	A0004455	Tommy Bar, 19 x 450 mm	EA	1
QC0000	A0011809	Vernier Metric Caliper, 150 mm x 0.02 mm Graduation	EA	1
AT0032	A0004417	Cold Flat Chisel, 13 x 150 mm	EA	1
AT0037	A0004422	Cold Flat Chisel, 19 x 200 mm	EA	1
AT0039	A0004424	Cold Flat Chisel, 25 x 250 mm	EA	1
GR0202	A0007904	Spring Divider, DD/6, 150 mm	EA	1
PE0095	E0002938	Large Corded Earplugs, No. 304, 1000106	EA	1
MS0320	A0010338	3 Piece Packing Extractor Set	EA	1
MF0300	A0009978	13 Piece Assorted File Set with Bag and Handles	EA	1
BK0102	A0004577	26 Blade Feeler Gauge, 1590 m	EA	1
MX3600	A0011185	20T Frame Hacksaw, 300 mm	EA	1
TX2003	A0014975	Ballpein Hammer with Fibreglass Handle , 25224, 700 g	EA	1
LS0124	A0009379	Ballpein Hammer with Wood Handle, FG04185, 200 g	EA	1
TX2005	A0014977	Softface Hammer with Fibreglass Handle ,65340, 40 mm	EA	1
MX0251	A0011005	Trimming Knife with Retractable Blade, 99E, SX-75	EA	1
RA0030	A0011866	2 Vial Torpedo/Boat Level, 230 mm	EA	1
BW0320	A0005134	Digital Millimeter, AC/DC, Tru RMS, RS232, TMB812, 1000V	EA	1
HS0920	C0000584	Brass Key to Differ padlock, 264, 38 mm, 3 Keys	EA	1
MX0151	Z0000031	Inside Straight Circlip Plier, 180 mm	EA	1
MX0153	A0010989	Outside Straight Circlip Plier, 180 mm	EA	1
MX0170	A0010992	Combination Plier with Insulated handle, 1000V, 200 mm	EA	1
BW0407	A0005146	Crimping Ratchet Plier, HD16UT, 1.5-16 mm (Uninsulated)	EA	1
MX0181	A0010995	Diagonal Cutter Plier with Insulated handle, 1000V, 190 mm	EA	1
MX0165	A0010990	Long nose Plier with Insulated Handle, 150 mm	EA	1
MX0190	A0010996	Vice Grip Plier, DI20, 250 mm	EA	1
MX0195	A0010997	Curved jaw Waterpump Plier, 250 mm	EA	1
RD0010	A0012021	Round Centre Punch, 117E, 150 mm	EA	1
RD0006	A0012020	Prick Punch, 816C, 100 mm	EA	1
MX0470	A0011098	Stainless Steel Measuring Rule, 150 mm	EA	1
MX0471	A0011099	Stainless Steel measuring Rule, 300 mm	EA	1
MX0110	A0010979	6 Piece Blackpoint Screwdriver Set, 10001	EA	1
GR0900	A0007939	Engineers Scriber, MS/-ST, E222, 190 mm	EA	1
TX0110	A0014929	24 Piece Bihex Socket Set, 1/2"DR, HS004070, 8-32 mm	EA	1
JB0037	A0008364	18 Piece Deep Offset Combination Spanner Set, CV, 6-24 mm	EA	1
GR1526	A0007981	6 piece Tube Spanner Set, No. 53B, 0-10BA	EA	1
NT0006	E0000984	Clear Safety Spectacles, SN180C	EA	1
AT0114	A00044441	Marlin Hex Spike, 25 x 300 mm	EA	1
GR0010	A0007887	Engineers Square, WS Grade, SS/4, 100 mm	EA	1
RA0070	A0011877	Automatic Wire Stripper, B Blade	EA	1
MX0400	A0011877	Rubber Case Measuring Tape, 16 mm x 3 m	EA	1
MG0610	A0010034	Voltage Tester, DCVF1 & Torchbat111, 1000V	EA	1
MX0232	A0011003	Straight handle Tinsnip, G245/10, 250 mm	EA	1
CT0050	A0005594	1 Tray Artisans Tray No. Slot. 1181, 650 x 275 x 250 mm	EA	1
JT0020	A0008490	9 Piece Hex Key Wrench Set, PS-B9, 1.5-10.9	EA	1
JT0022	A0008491	9 Piece Hex Key Wrench Set, PS-B9IN, 1/16-3/8"	EA	1
MX0453	A0011091	Heavy-Duty Adjustable Shifter Wrench, 250 mm	EA	1
JL0201	A0002102	Heavy-Duty Pipe Wrench, 250 mm	EA	1
JL0203	A0002103	Heavy-Duty Pipe Wrench, 350 mm	EA	1



A0011877



C0000584



A0005594



A0010034



A0005134



A0012021



A0012020



A0010992

A0004417

A0004422

A0004424



A00044441

A0004455



A0010990



A0010995



A0010989



Z0000031



A0010997



A0010996



A0011877



A0011877



A0011003



A0002085



A0002102



A0002103



E0000984

E0002938



A0010979



A0014929



A0008491



A0008490



A0008364



A0007981



A0011809



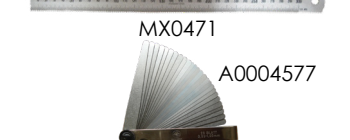
A0011866



A0007887



A0011098



MX0471

A0004577

41 Piece Motor Diesel Mechanic Toolkit				
Stock Code	System Code	Description	Uom	Qty
QC0000	A0011809	Vernier Metric Caliper, 150 mm x 0.02 mm Graduation	EA	1
GR1303	A007960	Brass Pump Oil Can, MP23RB, 500 ml	EA	1
PE0095	E0002938	Large Corded Earplugs, No. 304, 1000106	EA	1
MF0300	A0009978	13 Piece Assorted File Set with Bag and Handles	EA	1
BK0102	A0004577	26 Blade Feeler Gauge, 1590 m	EA	1
GR0801	A0007939	20T Frame Hacksaw, 300 mm	EA	1
TX2003	A0014975	Ballpein Hammer with Fibreglass Handle , 25224, 700 g	EA	1
LS0123	A0009378	Ballpein Hammer with Wood Handle, FG04185, 200 g	EA	1
TX2005	A0014977	Soffface Hammer with Fibreglass Handle ,65340, 40 mm	EA	1
TX2006	A0014978	Yellow Soffface Hammer head, 65340, 40 mm	EA	2
MJ0070	A0010138	General Purpose Multimeter, MT832	EA	1
HS0920	C0000584	Brass Key to Differ padlock, 264, 38 mm, 3 Keys	EA	1
MX0151	Z0000031	Inside Straight Circlip Plier, 180 mm	EA	1
MX0153	A0010989	Outside Straight Circlip Plier, 180 mm	EA	1
MX0170	A0010992	Combination Plier with Insulated handle, 1000V, 200 mm	EA	1
MX0181	A0010995	Diagonal Cutter Plier with Insulated handle, 1000V, 190 mm	EA	1
KN0350	A0008608	Flat Nose Plier KEN558-3050K 160 mm	EA	1
MX0166	A0010991	Long Nose Plier with Insulated Handle, 150 mm	EA	1
MX0190	A0010996	Vice Grip Plier, DI20, 250 mm	EA	1
MX0195	A0010997	Curved jaw Waterpump Plier, 250 mm	EA	1
MC0602	A0009830	12 Piece Chisel and Pin Punch Set, No. 3	EA	1
MX0471	A0011099	Stainless Steel measuring Rule, 300 mm	EA	1
MX0110	A0010979	6 Piece Blackpoint Screwdriver Set, 10001	EA	1
GR0900	A0007939	Engineers Scriber, MS/-ST, E222, 190 mm	EA	1
TX0110	A0014929	24 Piece Bihex Socket Set, 1/2"DR, HS004070, 8-32 mm	EA	1
JB0045	A0008369	17 Piece Deep Offset Combination Spanner Set, CV, 6-22 mm	EA	1
JB0035	A0008362	17 Piece Deep Offset Combination Spanner Set, CV, 1/4"-11/4"	EA	1
GD0695	A0006818	6 Piece Swivel Spanner Set, OE, 534	EA	1
JB0018	A0008350	Deep offset Combination Spanner, CV, 24 mm	EA	1
JB0021	A0008369	Deep offset Combination Spanner, CV, 27 mm	EA	1
JB0022	A0006810	Deep offset Combination Spanner, CV, 28 mm	EA	1
JB0024	A0008356	Deep offset Combination Spanner, CV, 30 mm	EA	1
JB0025	A0008357	Deep offset Combination Spanner, CV, 32 mm	EA	1
GD0681	A0008357	Swivel Combination Spanner, OE, 534, 11 mm	EA	1
NT0006	E0000984	Clear Safety Spectacles, SN180C	EA	1
GR0010	A0007887	Engineers Square, WS Grade, SS/4, 100 mm	EA	1
MX0400	A0011877	Rubber Case Measuring Tape, 16 mm x 3 m	EA	1
CT0050	A0005594	1 Tray Artisans Tray No. Slot. 1181, 650 x 275 x 250 mm	EA	1
JT0020	A0008490	9 Piece Hex Key Wrench Set, PS-B9, 1.5-10.9	EA	1
JT0022	A0008491	9 Piece Hex Key Wrench Set, PS-B9IN, 1/16-3/8"	EA	1



A0011877



C0000584



A0009830



A0010355



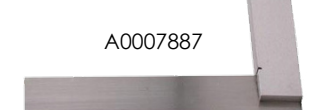
A007960



A0007939



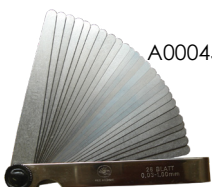
A0011866



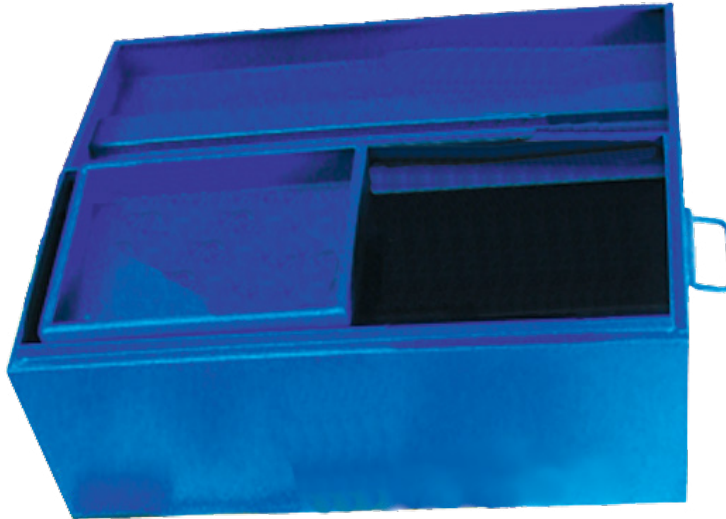
A0007887



A0011099



A0004577



A0005594



A0010992



A0010991



A0010995



A0008608



Z0000031



A0010989



A0010996



A0010997



A0007939



A0014977



A009378



A0014977



A0010979



A0010138



TX0110



A0008369



A0008362



A0006818



A0008350



A0008369



A0006810



A0008356



A0008357



A0008357



E0000984



E0002938

52 Piece Apprentice Plater Toolkit

Stock Code	System Code	Description	Uom	Qty
PE0000	E0002906	Leather Apron with Seam, PW2210, 90 x 60 mm	EA	1
AT0250	A0004455	Tommy Bar, 19 x 450 mm	EA	1
BK0130	A004586	Aluminium Sliding Bevel, 3789, 200 mm	EA	1
JL1005	A0008481	Fine Wire Brazing Brush with Wood Handle, 422, 5 x 15 Row	EA	1
MX0475	A0011103	Zinc Alloy Chalkline Case, 30 m	EA	1
AT0032	A0004417	Cold Flat Chisel, 13 x 150 mm	EA	1
AT0037	A0004422	Cold Flat Chisel, 19 x 200 mm	EA	1
AT0040	A0004423	Cold Flat Chisel, 25 x 250 mm	EA	1
CV0020	A0005609	Standard Curvo Centering Head, CNT6	EA	1
CV0000	A0009602	Standard Curvo Contour marker, CNT1	EA	1
GR0204	A0007906	Spring Divider, DD/4, 100 mm	EA	1
GR0201	A0007903	Spring Divider, DD/6, 150 mm	EA	1
GR0202	A0007904	Spring Divider, DD/10, 250 mm	EA	1
PE0095	E0002938	Large Corded Earplugs, No. 304, 1000106	EA	1
A0009987	A0009987	Plastic Handle 125 mm	EA	2
MF0014	A0009900	2nd Cut Flat File, 300 mm	EA	1
MF0004	A0009895	Flat Bastard Cut Flat File, 300 mm	EA	1
MF0104	A0009900	Round 2nd Cut File, 300 mm	EA	1
PE0042	E0002925	Chrome Leather Gloves, R8, 200 mm	EA	1
PE0035	E0002924	Flip Front Welding Gas Goggles, G280P	EA	1
MX3600	A0011185	20T Hacksaw Frame, 300 mm	EA	1
SK0070	A0012538	Straight Spring Handle Chipping hammer	EA	1
RA0030	A0011866	2 Vial Torpedo/Boat Level, 230 mm	EA	1
HS0920	C0000584	Brass Key to Differ padlock, 264, 38 mm, 3 Keys	EA	1
MX0160	A0010988	Heavy-Duty Fencing Plier, 250 mm	EA	1
EL0000	A0005880	Gas Plier, PA78	EA	1
MX0190	A0010996	Viece Grip Plier, DI20, 250 mm	EA	1
RD0010	A0012021	Round Centre Punch, 117E, 150 mm	EA	1
MX0474	A0011102	Line of Chords Steel Folding Rule, 60R, 600 mm	EA	1
MX0110	A0010979	6 Piece Blackpoint Screwdriver Set, 10001	EA	1
WR0023	WR0023	Blackpoint Mechanic Screwdriver, 6018, 8 x 250 mm	EA	1
GR0900	A0007939	Engineers Scriber, MS/-ST, E222, 190 mm	EA	1
JB0011	A0008339	Deep offset Combination Spanner, CV, 17 mm	EA	1
JB0013	A0008345	Deep offset Combination Spanner, CV, 19 mm	EA	1
JB0018	A0008350	Deep offset Combination Spanner, CV, 24 mm	EA	1
JB0024	A0008356	Deep offset Combination Spanner, CV, 30 mm	EA	1
HR0050	E0000754	Multi Purpose Spanner, No. 65	EA	1
PE0090	E0002936	1 Pair Leather Spats	EA	1
NT0006	E0000984	Clear Safety Spectacles, SN180C	EA	1
AT0114	A0004441	Marlin Hex Spike, 25 x 30 mm	EA	1
QC0075	A0011832	4 Piece Heavy-Duty Combination Square Set	EA	1
RA0500	A0011908	Metric Rafter Square, MTS4606, 50 x 600 mm	EA	1
SN0656	A0014078	Try/Mitre Steel Square, 46-510, 250 mm	EA	1
MX0415	A0011082	Rubber Case Measuring Tape, 13 mm x 20 m	EA	1
MX0400	A0011877	Rubber Case Measuring Tape, 16 mm x 3 m	EA	1
GW0001	A0008093	Straight Handle Tinsnip, G245/10, 250 mm	EA	1
CT0051	A0005595	1 Tray Artisans Tray No. Slot. 1181, 650 x 275 x 250 mm	EA	1
HR0010	HR0010	Nozzle Cleaner	EA	1
HR0015	F0000747	Key Spindle, SK	EA	1
HR0020	F0000748	Tripple Lighter Flint, TFL	EA	1
MX0454	A0002087	Heavy-Duty Adjustable Shifter Wrench, 300 mm	EA	1



A0011877



A0011082



A0005595



C0000584



A0012021



A0004417



AT0037



A0004423



A0004441



A0004455



A0009900



A0009895



A0009900



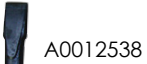
A0009987



A0009987



A0011185



A0012538



A0008481



A004586



A0007939



PE0000



E0002936



A0009934



A0010988



A0005880



A0010996



A0008093



A0008339



A0008345



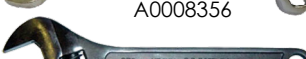
A0008350



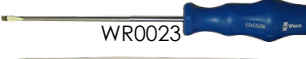
A0008356



A0002087



WR0023



WR0023



WR0023



WR0023



WR0023



WR0023



WR0023



WR0023



WR0023



WR0023



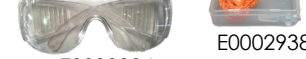
WR0023



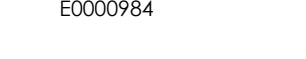
WR0023



WR0023



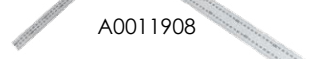
WR0023



WR0023



A0011908



A0011908



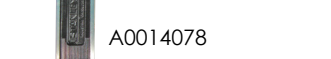
A0011908



A0011908



A0011908



A0011908



A0011908



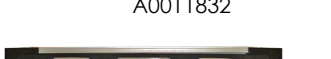
A0011908



A0011908



A0011908



A0011908



A0011908



A0011908



A0011908



A0011908



A0011908



A0011908



A0011908



A0011908



A0011908



A0011908



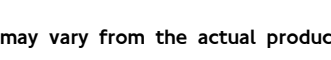
A0011908



A0011908



A0011908



A0011908

TOOLKITS AND ASSORTMENTS

56 Piece Apprentice Plater S

Stock Code	System Code	Description	Uom	Qty
PE0000	E0002906	Leather Apron with Seam, PW2210, 90 x 60 mm	EA	1
MS0050	A0010256	13 File Capacity Canvas Vag	EA	1
BK0130	A0004586	Aluminium Sliding Bevel, 3789, 200 mm	EA	1
JL1005	A0008481	Fine Wire Brazing Brush with Wood Handle, 422, 5 x 15 Row	EA	1
MX0475	A0011103	Zinc Alloy Chalkline Case, 30 m	EA	1
AT0037	A0004422	Cold Flat Chisel, 19 x 200 mm	EA	1
SE0020	A0012345	Flexible Curve, 600 mm	EA	1
HR0060	F0000756	69A Radius Cutter	EA	1
GR0204	A0007906	Spring Divider, DD/4, 100 mm	EA	1
GR0201	A0007903	Spring Divider, DD/6, 150 mm	EA	1
GR0202	A0007904	Spring Divider, DD/10, 250 mm	EA	1
PE0095	E0002938	Large Corded Earplugs, No. 304, 1000106	EA	1
JL1000.	JL1000.	File Brush, 463, 115 x 40 mm	EA	1
A0009987	A0009987	Plastic Handle 75 mm	EA	2
MF0623	A0009986	Plastic Handle 100 mm	EA	1
MF0620	A0009985	Plastic Handle 125 mm	EA	1
MF0012	A0009898	2nd Cut Flat File, 200 mm	EA	1
MF0014	A0009900	2nd Cut Flat File, 300 mm	EA	1
MF0004	A0009895	Flat Bastard Cut Flat File, 300 mm	EA	1
MF0103	A0009933	Round 2nd Cut File, 250 mm	EA	1
MF0104	A0009900	Round 2nd Cut File, 300 mm	EA	1
MF0132	A0009947	Square 2nd Cut File, 300 mm	EA	1
PE0042	A0009934	Chrome Leather Gloves, R8, 200 mm	EA	1
PE0035	E0002924	Flip Front Welding Gas Goggles, G280P	EA	1
GR0801	A0007935	20T Hacksaw Frame, 300 mm	EA	1
TX2003	A0014975	Ballpein Hammer with Fibreglass Handle, 25224, 700 g	EA	1
LS0124	A0009379	Ballpein Hammer with Wood Handle, FG04185, 200 g	EA	1
SK0070	A0012538	Straight Chipping Hammer with Spring Handle	EA	1
RA0030	A0011866	2 Vial Torpedo/Boat Level, 230 mm	EA	1
HS0920	C0000584	Brass Key to Differ padlock, 264, 38 mm, 3 Keys	EA	1
MX0161	A0010989	Heavy-Duty Fencing Plier, 250 mm	EA	1
MX0190	A0010996	Viece Grip Plier, DI20, 250 mm	EA	1
GD2020	A0007209	Welding Grip Plier, 138, 280 mm	EA	1
RD0005	A0012019	Square Centre Punch, 315C, 100 mm	EA	1
MX0474	A0011102	Line of Chords Steel Folding Rule, 60R, 600 mm	EA	1
WR0106	A0015329	Blackpoint Electrician Screwdriver, 6008, 5.5 x 100 mm	EA	1
GR0900	A0007939	Engineers Scriber, MS/-ST, E222, 190 mm	EA	1
JB0011	A0008339	Deep offset Combination Spanner, CV, 17 mm	EA	1
JB0013	A0008345	Deep offset Combination Spanner, CV, 19 mm	EA	1
JB0018	A0008350	Deep offset Combination Spanner, CV, 24 mm	EA	1
JB0022	A0008354	Deep offset Combination Spanner, CV, 28 mm	EA	1
JB0024	A0008356	Deep offset Combination Spanner, CV, 30 mm	EA	1
PE0090	E0002936	1 Pair Leather Spats	EA	1
NT0006	E0000984	Clear Safety Spectacles, SN180C	EA	1
QC0075	A0011832	4 Piece Heavy-Duty Combination Square Set, 300 mm	EA	1
RA0500	A0011908	Metric Rafter Square, MTS4606, 50 x 600 mm	EA	1
SN0655	A0014077	Try/Mitre Steel Square, 46-508, 200 mm	EA	1
MX0415	A0011082	Rubber Case Measuring Tape, 13 mm x 20 m	EA	1
MX0400	A0011877	Rubber Case Measuring Tape, 16 mm x 3 m	EA	1
GW0001	A0008093	Straight Handle Tinsnip, G245/10, 250 mm	EA	1
CT0050	A0005594	1 Tray Artisans Tray No. Slot. 1181, 650 x 275 x 275 mm	EA	1
HR0010	HR0010	Nozzle Cleaner	EA	1
HR0015	F0000747	Key Spindle, SK	EA	1
HR0020	F0000748	Tripple Lighter Flint, TFL	EA	1
MX0454	A0002087	Heavy-Duty Adjustable Shifter Wrench, 300 mm	EA	1



A0011877



A0005595



A0004422



A0012019



A0009898



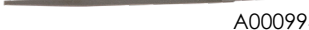
A0009900



A0009895



MF0103



A0009947



A0009900



A0009986 A0009987 A0009985



JL1000



A0010256



A0007939

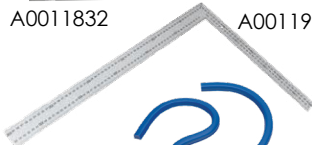


A0011102



A0011832

A0011908



A0012345



A0014077



A0011866



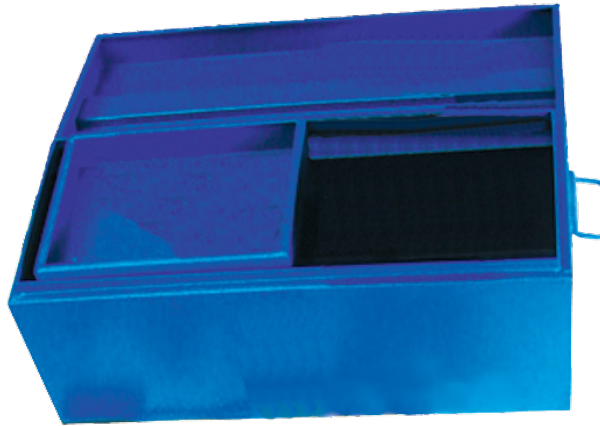
A0007906



A0007903



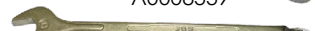
A0007904



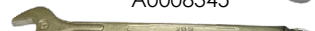
A0005594



A0008339



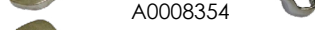
A0008345



A0008350



A0008354



A0008356



A0002087



A0015329



A0007935



A0014975



LS0124



A0012538



A0010989



A0010996



A0007209



A0008093



C0000584



PE0000



A0009934



E0002936



E0002924



E0000984



E0002938



HR0010



F0000747



F0000748



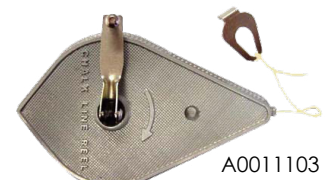
F0000756



A004586



A0008481



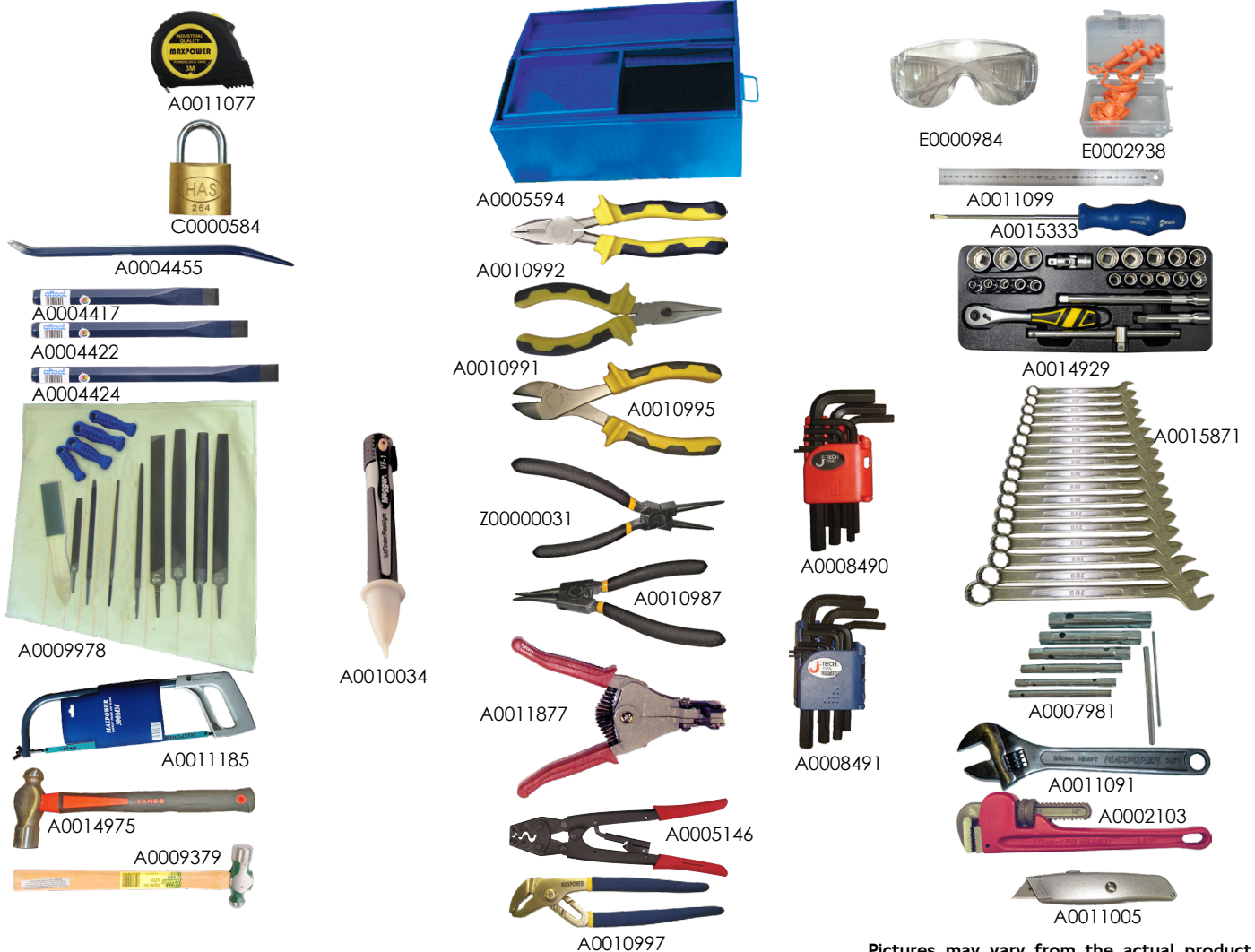
A0011103

29 Piece Plumber Aide Toolkits

Stock Code	System Code	Description	Uom	Qty
AT0037	A0004422	Cold Flat Chisel, 19 x 200 mm	EA	1
SN0078	A0013998	Tube Cutter, 93-020, 3-3- mm	EA	1
MF0004	A0009895	Flat Bastard Cut File, 300 mm	EA	2
MF0094	A0009928	Round Bastard Cut File, 300 mm	EA	2
PE0046	E0005143	Chrome Leather Gloves, 50 mm	EA	1
QC0030	A0011820	Heavy-Duty Caulking Gun	EA	1
MX3600	A0011185	20T Hacksaw Frame, 300 mm	EA	1
TX2002	A0014974	Ballpein Hammer with Fibreglass Handle, 25216, 500 g	EA	1
JL0051	A0008427	Hammer Club with Rubber handle, SABS, 1800 g	EA	1
MX0261	A0011011	3 Vial Aluminium Spirit Level, 600 mm	EA	1
HS0920	C0000584	Brass Key to Differ Padlock, 264, 38 mm, 3 Keys	EA	1
MX0170	A0010992	Combination Plier with Insulated Handle, 1000V, 200 mm	EA	1
MX0190	A0010996	Vicegrip Plier, DI-20, 250 mm	EA	1
WR0027	A0015320	Mechanic Blackpoint Screwdriver, 6022, 10 x 300 mm	EA	1
WR0108	A0015320	Mechanic Blackpoint Screwdriver, 6013, 6.5 x 100 mm	EA	1
PR0040	A0011694	Clear Silicone Sealant, 93509, 300 ml	EA	1
RA0055	A0011874	Basin Spanner, RIC5700	EA	1
NT0006	E0000984	Clear Safety Spectacles, SN180C	EA	1
RBO195	A0011941	Combination Square Set, F7506KH449, 300 mm	EA	1
MX0400	A0011877	Measuring Tape with Rubber Case, 16 mm x 3 m	EA	1
MX0232	A0011003	Straight Aviation Type Tinsnip, M3R, 250 mm	EA	1
GW0001	A0008093	Straight Handle Tinsnip, G245/10, 250 mm	EA	1
MX0535	F0000890	3 Tray Cantilever Toolbox, 550 x 230 x 160 mm	EA	1
MS1265	A0002087	Standard Butane Blow Torch, OXY0210, 850 Deg.	EA	1
MX0454	A0002087	Heavy-Duty Adjustable Shifter Wrench, 300 mm	EA	1
JL0201	A0002102	Heavy-Duty Pipe Wrench, 250 mm	EA	1
JL0203	A0002103	Heavy-Duty Pipe Wrench, 350 mm	EA	1

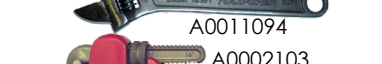
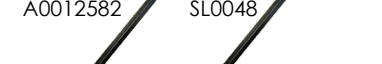
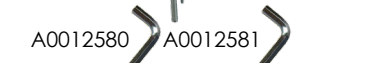


32 Piece Repairman Toolkits				
Stock Code	System Code	Description	Uom	Qty
AT0250	A0004455	Tommy Bar, 19 x 450 mm	EA	1
AT0032	A0004417	Cold Flat Chisel, 13 x 150 mm	EA	1
A0004422	A0004422	Cold Flat Chisel, 19 x 200 mm	EA	1
AT0039	A0004424	Cold Flat Chisel, 25 x 250 mm	EA	1
PE0095	E0002938	Large Corded Earplugs, No. 304, 1000106	EA	1
MFO300	A0009978	13 Piece File Set with Bag and Handles	EA	1
MX3600	A0011185	20T Hacksaw Frame, 300 mm	EA	1
TX2003	A0014975	Ballpein Hammer with Fibreglass handle, 25224, 700 g	EA	1
LS0124	A0009379	Ballpein hammer with Wood handle, FG04185, 200 g	EA	1
MX0251	A0011005	Trimming Trnife with Retractable Blade, 99E, SX-75	EA	1
HS0920	C0000584	Brass Key to Differ Padlock, 264, 38 mm, 3 Keys	EA	1
MX0151	Z00000031	Inside Straight Circlip Plier, 180 mm	EA	1
MX0153	A0010987	Outside Straight Circlip Plier, 180 mm	EA	1
MX0170	A0010992	Combination Plier with Insulated Handle, 1000V, 200 mm	EA	1
BW0407	A0005146	Crimping Ratchet Plier, HD16UT, 1.5-16 mm (Uninsulated)	EA	1
MX0181	A0010995	Diagonal Cutter Plier with Insulated Handle, 1000V, 190 mm	EA	1
MX0166	A0010991	Long Nose Plier with Insulated handle, 200 mm	EA	1
MX0195	A0010997	Curved Jaw Waterpump Plier, 250 mm	EA	1
MX0471	A0011099	Stainless Steel Measuring Rule, 300 mm	EA	1
WR0110	A0015333	Blackpoint Mechanic Screwdriver, 6014, 6.5 x 150 mm	EA	1
TX0110	A0014929	24 Piece Bihex Socket Set, 1/2" DR, HS004070, 8-32 mm, No Brace	EA	1
JB0035	A0015871	17 Piece Deep Offset Combination Spanner Set, CV, 6-22 mm	EA	1
GR1526	A0007981	6 Piece Tube Spanner Set, No. 035B, 0-10BA	EA	1
NT0006	E0000984	Clear Safety Spectacles, SN180C	EA	1
RA0070	A0011877	Automatic Wire Stripper, B Blade	EA	1
MX0400	A0011077	Rubber Case Measuring Tape, 16 mm x 3 m	EA	1
MG0610	A0010034	Voltage Tester, DCVF1 & Torchcat1111, 1000V	EA	1
CT0050	A0005594	1 Tray Artisans Trunk, No Slot, 1181, 650 x 275 x 275 mm	EA	1
JT0020	A0008490	9 Piece Hex Key Wrench Set, PS-B9, 1.5-10	EA	1
JT0022	A0008491	9 Piece Hex Key Wrench Set, PS-B9IN, 1/16-3/8"	EA	1
A0011091	A0011091	Heavy-Duty Adjustable Shifter Wrench, 250 mm	EA	1
JL0203	A0002103	Heavy-Duty Pipe Wrench, 350 mm	EA	1



33 Piece Repairman Toolkits

Stock Code	System Code	Description	Uom	Qty
PE0095	E0002938	Large Corded Bilsum Earplugs, No. 304, 1000106	EA	1
MF0300	A0009978	13 Piece Assorted File Set with Bag and Handles	EA	1
MX3600	A0011185	20T Hacksaw Frame, 300 mm	EA	1
TX2003	A0014975	Ballpein Hammer with Fibreglass Handle, 25224, 700 g	EA	1
LS0124	A0009379	Ballpein Hammer with Wood Handle, FG04185, 200 g	EA	1
MX0251	A0011005	Trimming Knife with Retractable Blade, 99E, SX-75	EA	1
HS0920	C0000584	Brass Key to Differ Padlock, 264, 38 mm, 3 Keys	EA	1
MX0151	Z0000031	Inside Straight Circlip Pliers, 180 mm	EA	1
MX0153	A0010989	Outside Straight Circlip Pliers, 180 mm	EA	1
MX0170	A0010992	Combination Plier with Insulated Handle, 1000V, 200 mm	EA	1
BW0407	A0005146	Crimping Ratchet Plier, HD16UT, 1.5-16 mm (Uninsulated)	EA	1
MX0181	A0010995	Diagonal Cutter Plier with Insulated Handle, 1000V, 190 mm	EA	1
MX0166	A001099	Long Nose Plier with Insulated Handle, 200 mm	EA	1
MX0190	A0010996	Vicegrip Plier, DI-20, 250 mm	EA	1
MX0195	A0010997	Curved Kaw Waterpump Plier, 250 mm	EA	1
MX0471	A0011099	Stainless Steel Measuring Rule, 300 mm	EA	1
MX0115	A0010980	9 Piece Blackpoint Screwdriver Set, 10009	EA	1
JB0040	A0008366	26 Piece Deep Offset Combination Spanner Set, CV, 6-32 mm	EA	1
GR1526	A0007981	6 Piece Tube Spanner Set, No. 53B, 0-10BA	EA	1
GR1511	A0007979	4 Piece Tube Spanner Set, TBS2M, 6-13 mm	EA	1
NT0006	E0000984	Clear Safety Spectacles, SN180C	EA	1
MX0400	A0011877	Rubber Case Measuring Tape , 16 mm x 3 m	EA	1
MG0610	A0010034	Voltage Tester DCVF1 & Torchbat111, 1000V	EA	1
MJ0035	A0010132	Analogue Insulation Tester, K3132, 1000V	EA	1
MX0535	F0000890	3 Tray Cantilever Toolbox, 550 x 230 x 160 mm	EA	1
JT0020	A0008490	9 Piece Hex Key Wrench Set, PS-B9, 1.5-10	EA	1
MX0454	A0002087	Heavy-Duty Adjustable Shifter Wrench, 300 mm	EA	1
MX0456	A0011094	Heavy-Duty Adjustable Shifter Wrench, 450 mm	EA	1
SL0044	A0012580	Hex Key Allen Wrench, 12 mm	EA	1
SL0045	A0012581	Hex Key Allen Wrench, 14 mm	EA	1
SL0046	A0012582	Hex Key Allen Wrench, 16 mm	EA	1
SL0048	A0012584	Hex Key Allen Wrench, 18 mm	EA	1
JL0203	A0002103	Heavy-Duty Pipe Wrench, 350 mm	EA	1

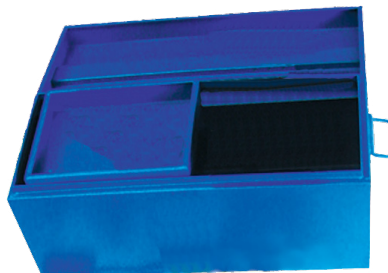


33 Piece Apprentice Rigger Toolkit

Stock Code	System Code	Description	Uom	Qty
AT0032	A0004417	Cold Flat Chisel, 13 x 150 mm	EA	1
AT0037	A0004422	Cold Flat Chisel, 19 x 200 mm	EA	1
AT0039	A0004424	Cold Flat Chisel, 25 x 250 mm	EA	1
MX0211	A0011000	Wire Rope Cutter, WC6, 200 mm	EA	1
PE0095	E0002938	Large Corded Earplugs, No. 304, 1000106	EA	1
A0009987	A0009987	Plastic Handle, 125 mm	EA	2
MF0004	A0009895	Bastard Cut Flat File, 300 mm	EA	1
MF0084	A0009923	Smooth Cut Half Round File, 300 mm	EA	1
PE0042	E0002925	Chrome Leather Gloves, R8, 200 mm	EA	1
MX3600	A0011185	20T Hacksaw Frame, 300 mm	EA	1
TX2003	A0014975	Ballpein Hammer with Fibreglass Handle, 25224, 700 g	EA	1
JL0122	A0008444	Copper Hammer with Rubber Handle, 1800 g	EA	1
HS0920	C0000584	Brass key to Differ Padlock, 264, 38 mm, 3 Keys	EA	1
HW0021	A0008225	End Cutting Nipper Plier, A3 101, 200 mm	EA	1
MX0161	A0010989	Heavy-Duty Fencing Plier, 300 mm	EA	1
MX0190	A0010996	Vicegrip Plier, DI-20, 250 mm	EA	2
MX0474	A0011102	Line of Chords Steel Folding Rule, 60R, 600 mm	EA	1
WR0018	A0015317	Mechanic Blackpoint Screwdriver, 6015, 6.5 x 200 mm	EA	1
WR0119	A0015340	Mechanic Blackpoint Screwdriver, 6021, 10 x 250 mm	EA	1
JB0040	A0008366	26 Piece Deep Offset Combination Spanner Set, CV, 6-32 mm	EA	1
NT0006	A0015857	Clear Safety Spectacles, SN180C	EA	1
AT0114	A0004441	Marlin Hex Spike, 25 x 300 mm	EA	1
RB0095	A0011927	Diameter Tape, PR22MD, 13 mm x 3.5 m	EA	1
MX0410	Z0000652	Rubber Case Measuring Tape, 13 mm x 10 mm	EA	1
MX0400	A0011077	Rubber Case Measuring Tape, 16 mm x 3 mm	EA	1
CT0050	A0005594	1 Tray No Slot Artisans Trunk 1181, 650 x 275 x 275 mm	EA	1
JT0020	A0008490	9 Piece Hex Key Wrench Set, PS-B9, 1.5-10	EA	1
MX0453	A0011091	Heavy-Duty Adjustable Shifter Wrench, 250 mm	EA	1
MX0454	A0011092	Heavy-Duty Adjustable Shifter Wrench, 300 mm	EA	1
JL0210	A0008469	Podger Ratchet Wrench, 10 x 13 mm	EA	1
JL0220	A0008467	Podger Ratchet Wrench, 17 x 19 mm	EA	1



C0000584



A0005594



A0011077



A0011927



Z0000652



A0004417



A0004422



A0004424



A0004441



A0009895



A0009923



A0009987



A0009987



A0011185



A0014975



A0008444



A0008225



A0010989



A0010996



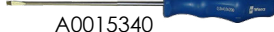
A0011000



A0011102



A0015317



A0015340



E0002925



A0015857



E0002938



A0008366



A0011091



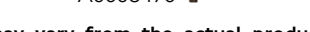
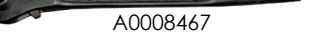
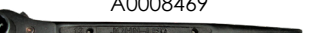
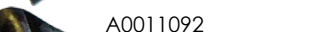
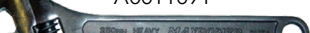
A0011092



A0008469



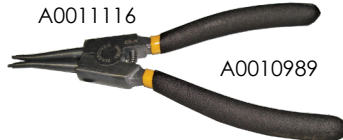
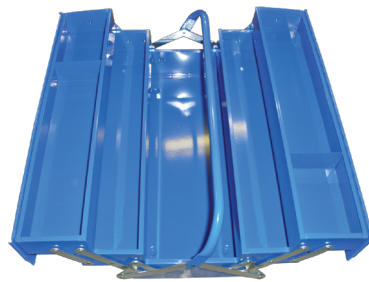
A0008467



A0008490

37 Piece Aide Rigger Toolkit

Stock Code	System Code	Description	Uom	Qty
MF0014	A0009900	Flat File 2nd Cut, 300 mm	EA	1
MF0074	A0009918	Half Round File 2nd Cut, 300 mm	EA	1
MX3600	A0011185	20T Hacksaw Frame, 300 mm	EA	1
TX2003	A0014975	Ballpein Hammer with Fibreglass Handle, 25224, 700 g	EA	1
LS0501	A0009528	Copper Hammer with Wood Handle, 1.8 kg	EA	1
MX0153	A0010989	Outside Straight Circlip Plier, 180 mm	EA	1
MX0161	A0010989	Heavy-Duty Fencing Plier, 300 mm	EA	1
MX0190	A0010996	Vicegrip Plier, DI20, 250 mm	EA	1
MX0474	A0011102	Line of Chords Steel Folding Rule, 60R, 600 mm	EA	1
MC0537	A0009819	Electricians Screwdriver, 6 x 150 mm	EA	1
MC0512	A0009819	Mechanics Screwdriver, 10 x 250 mm	EA	1
A0008336	A0008336	Deep Offset Combination Spanner, CV, 10 mm	EA	1
JB0005	A0008337	Deep Offset Combination Spanner, CV, 11 mm	EA	1
JB0006	A0008338	Deep Offset Combination Spanner, CV, 12 mm	EA	1
JB0007	A0008339	Deep Offset Combination Spanner, CV, 13 mm	EA	1
JB0008	A0008340	Deep Offset Combination Spanner, CV, 14 mm	EA	1
JB0009	A0008341	Deep Offset Combination Spanner, CV, 15 mm	EA	1
JB0010	A0008342	Deep Offset Combination Spanner, CV, 16 mm	EA	1
JB0011	A0008339	Deep Offset Combination Spanner, CV, 17 mm	EA	1
JB0012	A0008343	Deep Offset Combination Spanner, CV, 18 mm	EA	1
JB0013	A0008345	Deep Offset Combination Spanner, CV, 19 mm	EA	1
JB0014	A0008346	Deep Offset Combination Spanner, CV, 20 mm	EA	1
JB0015	A0008347	Deep Offset Combination Spanner, CV, 21 mm	EA	1
JB0016	A0008348	Deep Offset Combination Spanner, CV, 22 mm	EA	1
JB0017	A0008349	Deep Offset Combination Spanner, CV, 23 mm	EA	1
JB0018	A0008350	Deep Offset Combination Spanner, CV, 24 mm	EA	1
JB0019	A0008351	Deep Offset Combination Spanner, CV, 25 mm	EA	1
JB0020	A0008352	Deep Offset Combination Spanner, CV, 26 mm	EA	1
JB0021	A0008353	Deep Offset Combination Spanner, CV, 27 mm	EA	1
JB0022	A0008354	Deep Offset Combination Spanner, CV, 28 mm	EA	1
JB0023	A0008355	Deep Offset Combination Spanner, CV, 29 mm	EA	1
JB0024	A0008356	Deep Offset Combination Spanner, CV, 30 mm	EA	1
JB0025	A0008357	Deep Offset Combination Spanner, CV, 32 mm	EA	1
MX0415	A0011082	Rubber Case Measuring Tape, 13 mm x 20 m	EA	1
MX0540	A0011116	5 Tray Cantilever Toolbox, 550 x 207 x 226 mm	EA	1
MX0453	A0011091	Heavy-Duty Adjustable Shifter Wrench, 250 mm	EA	1
MX0454	A0002087	Heavy-Duty Adjustable Shifter Wrench, 300 mm	EA	1





Stainless Steel Tool Trolley & Tool Chests				
Stock Code	Description	Size		
		H (mm)	W (mm)	D (mm)
A0031195	7 Drawer Tool Trolley	780	680	470
A0031194	7 Drawer Tool Chest	485	680	470



A0031194



A0031195

183 Piece Maintenance Tool Trolleys	
Stock Code	Description
A0031320	7 Drawer Trolley Complete with 183 Tools Ideal for any Maintenance Technician



A0031320
MTT7



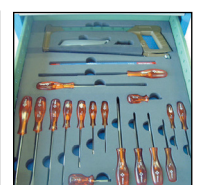
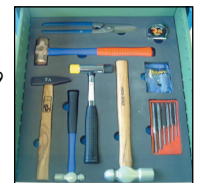
Diesel Mechanics Tool Trolleys	
Stock Code	Description
A0031321	7 drawer tool trolley and 7 drawer Stainless Steel tool chest complete with a set of tools for a Diesel Mechanic

Complete Mechanics Tool Trolleys	
Stock Code	Description
A0031319	7 drawer Heavy-Duty tool trolleys complete with 176 tools. Ideal for Motor Mechanics.

NOTE: A complete list of contents available on request



A0031319



TQ001

A0031321



TQT1



A0034925

Electrical Boxes

Stock Code	Contents
TQT1	5 Tray Toolbox, 550 x 230 x 220 mm Digital Multimeter, 600V Engineer Pliers, 200 mm, 1000V (Insulated) Diagonal Cutter, 200 mm, 1000V (Insulated) Long Nose Pliers, 200 mm, 1000V (Insulated) Round Nose Pliers, 160 mm Utility Knife, Rubber Grip, Push Button Waterpump Pliers, 250 mm Vice Grip, 250 mm 6 Piece Screwdriver Set Automatic Wire Stripper, 1.0-3.2 mm Premium Hacksaw Frame, 300 mm Steel Rule, 300 mm Shifting Spanner, 300 mm 19 Piece Combination Spanner Set, 6-24 15° 13 Piece 1/2" Drive Socket Set, 8-22 mm Steel Measuring Tape, 3 x 12.5 mm Brass Padlock, 38 mm Ball Pein Hammer, 450 g 150 mm Vernier 0.02 mm 150 mm Engineers Steel Square Standard Hex Key Set, 1.5-10 mm Box Standard Hex Key Set, 1/16-3/8" Box File Set 250 mm Flat, hr, tri, rnd & sq 2nd Earplugs Poly Carbon Safety Glasses Set of 5 Drive Pin Punches Crimper, 1.5-10 mm, Non Insulated Lugs Scriber Divider Spring Joint 100 mm Tube Spanner Set 8-19 mm

Filter Boxes

Stock Code	Contents
A0034925	Toolbox Chest, 660 x 370 x 285 mm 19 piece Spanner Set, 6-24 15° 17 Piece 1/2" Drive Socket Set, 10-24 mm 6 Piece Screwdrivers Set Ball Pein Hammer, 220 g Ball Pein Hammer, 680 g Combination Pliers, 200 mm Long Nose Pliers, 200 mm Diagonal Cutters, 180 mm External Circlip Pliers Straight, 175 mm Internal Circlip Pliers Straight, 175 mm External Circlip Pliers Bent, 175 mm Internal Circlip Pliers Bent, 175 mm Standard Hex Key Set, 1.5-10 mm Box Standard Hex Key Set 1/16-3/8" Box Brass Padlock, 38 mm 150 mm Vernier, 0.02 mm Shifting Spanner, 150 mm Shifting Spanner, 300 mm Aviation Tin Snips, Straight, 250 mm Vice Grip, 250 mm Outside Micrometer, 0-25 mm Outside Micrometer, 25-50 mm Malleable Cast Iron Pipe Wrench, 350 mm Mag Base, No Fine Adjustment Dial Indicator, 58 x 0.01 x 10 mm Premium Hacksaw Framem 300 mm File Set 250 mm Flat, hr, tri, rnd & sq 2nd Set of 5 Drive Pin Punches Divider Spring Joint, 150 mm Outside Spring Joint Caliper, 150 mm Inside Spring Joint Caliper, 150 mm Steel Rule, 300 mm Steel Measuring Tape 5x16 mm Precision Data Book, Metric Double End Steel Scriber Jenny Caliper Plain Leg, 150 mm Poly Carbon Safety Glasses Screw Pitch Gauge 55°/60°, 52 Blades Cold Chisel, 19x180 mm Soft Face Hammer Hollow Punch Set, 3-20 mm Prick Punch, 8 mm Tommy Bar, 450 mm Earplugs Feeler Gauge, 20 Leaf



A0031221



A0034936

Millwright Boxes	
Stock Code	Contents
A0031221	Toolbox Chest, 660 x 370 x 285 mm Digital Multimeter, 600V Combination Pliers, 200 mm Diagonal Cutters, 180 mm Long Nose Pliers, 200 mm Round Nose Pliers, 160 mm 6 Piece Screwdrivers Set External Circlip Pliers, Straight, 175 mm Internal Circlip Pliers, Straight, 175 mm External Circlip Pliers, Bent, 175 mm Internal Circlip Pliers, Bent, 175 mm Standard Hex Key Set 1.5-10 mm Box Standard Hex Key Set 1/16-3/8" Box Crimper, 1.5-10 mm, Non Insulated Lugs Automatic Wire Stripper, 1.0-3.2 mm Water Pump Pliers, 250 mm Premium Hacksaw Frame, 300 mm 150 mm Vernier, 0.02 mm Outside Micrometer, 0-25 Outside Micrometer, 25-50 Padlock Brass, 38 mm Screw Pitch Gauge, 55°/60°, 52 Blades Steel Measuring Tape, 5 x 16 mm File Set 250 mm Flat, hr, tri, rnd & sq 2nd Feeler Gauge, 26 Leaf, Imperial Knife Utility Vice Grip, 250 mm 26 piece Combination Spanner Set 6-32 Ball Pein Hammer, 680 g Fine Adjustment Magnetic Base Dial Indicator, 58 x 0.01 x 10 Hollow Punch Set, 2-10 mm English Tin Snips, 300 mm Cold Chisel, 19 x 180 mm Magnetic Level, 230 mm Shifting Spanner, 150 mm Shifting Spanner, 300 mm Tommy Bar, 450 mm Tube Spanner, 8-9 mm Tube Spanner, 10-11 mm Centre Punch, 5 x 8 x 100 Pipe Wrench, 350 mm Divider Spring Joint, 150 mm Scriber Poly Carbon Safety Glasses Earplugs Zeus Precision Data Book, Metric 28 piece Socket Set, 8-32

Diesel Mechanic Boxes	
Stock Code	Contents
A003436	Toolbox Chest, 660 x 370 x 285 mm 28 Piece 1/2" Drive Socket Set, 8-32 mm 22 piece Combination Spanner Set, 6-32 15° Shifting Spanner, 300 mm Shifting Spanner, 450 mm Pipe Wrench, 450 mm Water Pump Pliers, 250 mm Vice Grip, 250 mm Ball Pein Hammer, 220 g Ball Pein Hammer, 900 g Hollow Punch Set, 6-19 6 Piece Screwdrivers Set Set of 5 Drive Pin Punches 150 mm Vernier, 0.02 mm Combination Pliers, 200 mm Long Nose Pliers, 200 mm Diagonal Cutters, 180 mm Brass Padlock, 38 mm Internal Circlip Pliers, Straight, 175 mm External Circlip Pliers, Straight, 175 mm Internal Circlip Pliers, Bent, 175 mm External Circlip Pliers, Bent, 175 mm Feeler Gauge, 26 Leaf English Tin Snips, 250 mm Outside Spring Joint Caliper, 150 mm Inside Spring Joint Caliper, 150 mm Centre Punch 5 x 8 x 100 Knife Utility Digital Multimeter, 600V Steel Rule, 300 mm File Set, 250 mm, Flat, hr, tri, rnd & sq 2nd Standard Hex Key Set, 1.5-10 mm Box Standard Hex Key Set, 1/16-3/8" Box 9 Piece 1/2" Hex Set, 4-17 mm 9 Piece 1/2" Torx Set, T20-T60 Tommy Bar, 450 mm Divider Spring Joint, 150 mm

Plater Welder Box	
Stock Code	Contents
A0035774	Toolbox Chest, 660 x 370 x 285 mm Curvomark Contour Marker Standard Curvomark Centre Head Ball Pein Hammer, 680 g Ball Pein Hammer, 900 g Chalk For Chalkline Chalkline Aluminium Sliding Bevel, 300 mm 22 piece Combination Spanner Set 6-32 15° Premium Hacksaw Frame, 300 mm 6 Piece Screwdrivers Set Steel Rule, 300 mm Steel Rule, 600 mm Steel Rule, 1000 mm English Tin Snips, 250 mm Steel Measuring Tape, 5 x 16 mm Steel Measuring Tape, Wind Up, 30 m x 10 mm Gloves Leather Apron GBL Chrome Welding Goggles Standard Welding Helmet Steel Beam Trammel, 365 mm Diameter Engineers Steel Square 150 mm Steel Line Cord, 600 mm Brass Padlock, 38 mm Prick Punch, 8 mm Centre Punch, 5 x 8 x 100 mm Lighter Triple Flint Standard Hex Key Set, 1.5-10 mm Box Standard Hex Key Set, 1/16-3/8" Box Vice Grip, 250 mm Scriber Outside Spring Joint Caliper, 150 mm Inside Spring Joint Caliper, 150 mm Divider Spring Joint, 150 mm File Set 250 mm Flat, hr, tri, rnd & sq 2nd Cold Chisel, 19 x 180 mm Divider Spring Joint 300 mm Poly Carbon Safety Glasses Tip Cleaner Set Boilermaker Square, 600 x 400 mm



Die Cast Aluminium Convenient Toolbox			
Stock Code	Description	Size	Layer
A0030314	1/2" Socket	8 mm	Top
A0030315	1/2" Socket	9 mm	Top
A0030298	1/2" Socket	10 mm	Top
A0030299	1/2" Socket	11 mm	Top
A0030300	1/2" Socket	12 mm	Top
A0030301	1/2" Socket	13 mm	Top
A0030302	1/2" Socket	14 mm	Top
A0030303	1/2" Socket	15 mm	Top
A0030305	1/2" Socket	17 mm	Top
A0030307	1/2" Socket	19 mm	Top
A0030309	1/2" Socket	22 mm	Top
A0030665	1/2" Ratchet	125 mm	Top
A0030661	1/2" Extension	300gram	Top
EH300	Engineers Hammer	160 mm	Top
A0037599	Long Nose Pliers	180 mm	Top
A0027594	Engineers Pliers	3m	Top
A0029701	Tape Measure	1.5 mm	Top
A0031079	Hex Key	2 mm	Top
A0031048	Hex Key	2.5 mm	Top
A0031085	Hex Key	3 mm	Top
A0031086	Hex Key	4 mm	Top
A0031050	Hex Key	5 mm	Top
A0031092	Hex Key	6 mm	Top
A0031098	Hex Key	8 mm	Top
A0031103	Hex Key	10 mm	Top
A0031082	Hex Key		Top
UHSF	Hacksaw Frame		Bottom
A0037691	Diagonal Cutters		Bottom
A0027616	Waterpump Pliers		Bottom
A0020643	Combination Spanner	10 mm 15°	Bottom
A0030895	Combination Spanner	11 mm 15°	Bottom
A0030864	Combination Spanner	13 mm 15°	Bottom
A0030867	Combination Spanner	17 mm 15°	Bottom
A0030868	Combination Spanner	19 mm 15°	Bottom
A0027773	Screwdriver		Flat 3.5x75
A0027756	Screwdriver		Flat 4x100
A0027757	Screwdriver		Flat 6x150
A0027760	Screwdriver		Flat 8x150
A0027753	Screwdriver		Flat 10x150
A0027758	Screwdriver		Flat 6x40
WPSDX40	Screwdriver		Phillips No2
A0027751	Screwdriver		Phillips No1
A0027769	Screwdriver		Phillips No2
A0027776	Screwdriver		Pozi No2

Die Cast Aluminium Convenient Toolbox			
Stock Code	Description	Size	Layer
A0030314	1/2" Socket	8 mm	Top
A0030315	1/2" Socket	9 mm	Top
A0030298	1/2" Socket	10 mm	Top
A0030299	1/2" Socket	11 mm	Top
A0030300	1/2" Socket	12 mm	Top
A0030301	1/2" Socket	13 mm	Top
A0030302	1/2" Socket	14 mm	Top
A0030303	1/2" Socket	15 mm	Top
A0030305	1/2" Socket	17 mm	Top
A0030307	1/2" Socket	19 mm	Top
A0030309	1/2" Socket	22 mm	Top
A0030665	1/2 Ratchet	125 mm	Top
A0030661	1/2 Extension	680 gram	Top
A0030661	Ball Pein Hammer	160 mm	Top
A0027720	Long Nose Pliers	180 mm	Top
A0037599	Engineers Pliers		Top
A0027594	Hex Key Clip		Top
A0029701	Diagonal Cutter		Bottom
A0027616	Water Pump Pliers		Bottom
A0030877	Combination Spanner	6 mm 150	Bottom
A0030901	Combination Spanner	7 mm 150	Bottom
A003087	Combination Spanner	8 mm 150	Bottom
A0030907	Combination Spanner	9 mm 150	Bottom
A0030895	Combination Spanner	10 mm 150	Bottom
A0030864	Combination Spanner	11 mm 150	Bottom
A0030837	Combination Spanner	12 mm 150	Bottom
A0030869	Combination Spanner	13 mm 150	Bottom
A0030864	Combination Spanner	14 mm 150	Bottom
A0030867	Combination Spanner	15 mm 150	Bottom
A0030868	Combination Spanner	16 mm 150	Bottom
A0030869	Combination Spanner	17 mm 150	Bottom
A0030869	Combination Spanner	18 mm 150	Bottom
CS20/15	Combination Spanner	19 mm 150	Bottom
A0030895	Combination Spanner	20 mm 150	Bottom
A0031082	Combination Spanner	21 mm 150	Bottom
A0030874	Combination Spanner	22 mm 150	Bottom
A0030876	Combination Spanner	24 mm 150	Bottom
A0027756	Screwdriver		Flat 3.5x75
A0027757	Screwdriver		Flat 4X100
A0027760	Screwdriver		Flat 6X150
A0027753	Screwdriver		Flat 8X150
A0027758	Screwdriver		Flat10x150
WPSDX40	Screwdriver		Flat 6X40
A0027751	Screwdriver		Phillips No2
A0027769	Screwdriver		Phillips No1
A0027776	Screwdriver		Phillips No2



Die Cast Aluminium Convenient Toolbox

Stock Code	Description	Size
A0030314	1/2" Socket	10 mm
A0030298	1/2" Socket	11 mm
A0030299	1/2" Socket	12 mm
A0030300	1/2" Socket	13 mm
A0030301	1/2" Socket	14 mm
A0030302	1/2" Socket	15 mm
A0030303	1/2" Socket	16 mm
A0030304	1/2" Socket	17 mm
A0030305	1/2" Socket	18 mm
A0030306	1/2" Socket	19 mm
A0030307	1/2" Socket	21 mm
A0030575	1/2" Socket	22 mm
A0030309	1/2" Socket	24 mm
A0030311	1/2" Socket	27 mm
A0030312	1/2" Socket	30 mm
A0030576	1/2" Socket	32 mm
A0030313	1/2" Socket	5 mm
A0030342	1/2" Torx Socket	6 mm
1/2ST35	1/2" Torx Socket	8 mm
A0030409	1/2" Torx Socket	10 mm
A0030343	1/2" Torx Socket	12 mm
A0030410	1/2" Torx Socket	14 mm
A0030411	1/2" Torx Socket	125 mm
A0030665	1/2 Ratchet	21
A0030661	1/2 Extension	26
A0030338	1/2 Sliding T	250 mm
A0030668	1/2 Universal Joint	1.5-10 mm
1/2SPS21	1/2 Spark Plug Socket	250 mm
FG26	Feeler Gauge	4 Spare Blades
A0027616	Water Pump Pliers	
A0031051	Hex Key Clip	
A0031000	Shifting spanner	
H001664	Utility knife	
A0032036	Combination Spanner	6 mm
A0032036	Combination Spanner	7 mm
A0030950	Combination Spanner	8 mm
A0032038	Combination Spanner	9 mm
A0020718	Combination Spanner	10 mm
A0032022	Combination Spanner	11 mm
A0032023	Combination Spanner	12 mm
A0030954	Combination Spanner	13 mm
A0030942	Combination Spanner	14 mm
A0032024	Combination Spanner	15 mm
A0032025	Combination Spanner	16 mm
A0030944	Combination Spanner	17 mm
A0030956	Combination Spanner	18 mm
A0030945	Combination Spanner	19 mm
A0032026	Combination Spanner	20 mm
A0032027	Combination Spanner	21 mm
A0032028	Combination Spanner	22 mm
A0027773	Screwdriver	Flat 3.5x75
A0027756	Screwdriver	Flat 4X100
A0027757	Screwdriver	Flat 6X150
A0027760	Screwdriver	Flat8X150
A0027753	Screwdriver	Flat10x150
A0027758	Screwdriver	Flat 6X40
A0027749	Screwdriver	Philips No2
A0027751	Screwdriver	Philips No1
A0027769	Screwdriver	Philips No2
A0027776	Screwdriver	Pozi No2

Die Cast Aluminium Convenient Toolbox Pl

Stock Code	Description	Size
A0030314	1/2" Socket	8 mm
A0030298	1/2" Socket	10 mm
A0030299	1/2" Socket	11 mm
A0030300	1/2" Socket	12 mm
A0030301	1/2" Socket	13 mm
A0030302	1/2" Socket	14 mm
A0030303	1/2" Socket	15 mm
A0030304	1/2" Socket	16 mm
A0030305	1/2" Socket	17 mm
A0030306	1/2" Socket	18 mm
A0030307	1/2" Socket	19 mm
A0030575	1/2" Socket	21 mm
A0030309	1/2" Socket	22 mm
A0030311	1/2" Socket	24 mm
A0030312	1/2" Socket	27 mm
A0030576	1/2" Socket	30 mm
A0030313	1/2" Socket	32 mm
A0030342	1/2" Torx Socket	5 mm
1/2ST35	1/2" Torx Socket	6 mm
A0030409	1/2" Torx Socket	8 mm
A0030343	1/2" Torx Socket	10 mm
A0030410	1/2" Torx Socket	12 mm
A0030411	1/2" Torx Socket	14 mm
A0030665	1/2 Ratchet	125 mm
A0030661	1/2 Extension	21
A0030338	1/2 Sliding T	26
A0030668	1/2 Universal Joint	250 mm
1/2SPS21	1/2 Spark Plug Socket	1.5-10 mm
FG26	Feeler Gauge	250 mm
A0027616	Water Pump Pliers	4 Spare Blades
A0031051	Hex Key Clip	
A0031000	Shifting spanner	
H001664	Utility knife	
CCSET6-22/17/15	6-22/17 Set CS	6 mm
A0030877	Combination Spanner	7 mm
A0030906	Combination Spanner	8 mm
A0030878	Combination Spanner	9 mm
A0030907	Combination Spanner	10 mm
A0030916	Combination Spanner	11 mm
A0030895	Combination Spanner	12 mm
A0030896	Combination Spanner	13 mm
A0030864	Combination Spanner	14 mm
A0030865	Combination Spanner	15 mm
A0030897	Combination Spanner	16 mm
A0030866	Combination Spanner	17 mm
A0030867	Combination Spanner	18 mm
A0030898	Combination Spanner	19 mm
A0030868	Combination Spanner	20 mm
A0030869	Combination Spanner	21 mm
A0030927	Combination Spanner	22 mm
A0030870	Combination Spanner	Flat 3.5x75
A0027773	Screwdriver	Flat 4X100
A0027756	Screwdriver	Flat 6X150
A0027757	Screwdriver	Flat8X150
A0027760	Screwdriver	Flat10x150
A0027753	Screwdriver	Flat 6X40
A0027758	Screwdriver	Philips No2
A0027749	Screwdriver	Philips No1
A0027751	Screwdriver	Philips No2
A0027769	Screwdriver	Pozi No2